



# MERRY CHRISTMAS



## WEATHER

	Min	Max	Precip
Wednesday, Dec. 18	14	22	0.00
Thursday, Dec. 19	17	23	0.00
Friday, Dec. 20	17	23	0.00
Saturday, Dec. 21	17	23	0.00
Sunday, Dec. 22	17	23	0.00
Monday, Dec. 23	17	23	0.00
Tuesday, Dec. 24	17	23	0.00

# The Chelsea Standard

## QUOTE

Nothing is more honorable than a grateful heart.  
—Seneca

NINETY-THIRD YEAR—No. 26

18 Pages This Week

CHELSEA, MICHIGAN, THURSDAY, DECEMBER 26, 1963

10c per Copy

SUBSCRIPTION \$3.00 PER YEAR

## Bulldogs Lose To Dexter in Final Seconds

### Lead Changes Hands 9 Times in Final 8 Minutes

Chelsea High's Bulldogs were defeated by Dexter in the much-contested game played here Friday night.

An exciting moment for the crowd on hand was when a 62-62 tie was broken by Dexter's Arch Bradley with only 29 seconds of game left and each team gained two more points before the game ended with a score of 66-64. Curt Farley, consistently Chelsea's high scorer, accounted for points in Friday's game.

At the end of the second quarter Dexter was leading, 43-33. Their point advantage came from rebounds; Arch Bradley and Ron All of Dexter continually scored the offensive boards.

In the second half of the game Chelsea went ahead by one point, 54, at the beginning of the fourth quarter. Chelsea's Ed Winland, Dennis Stoffer, Curt Farley and Charles Schmunk had out-rebounded Dexter during the third quarter to put Chelsea back in the game.

It was in the fourth quarter, with 29 seconds left to play, that Dexter's Arch Bradley broke the 62 tie with two free throws. Chelsea had time to score but lost the ball, with 11 seconds remaining, on a traveling violation.

Doug Dunham of Dexter was fouled and scored two more points to put Dexter ahead, 66-62, on a last-second basket.

Curt Farley scored, gaining two more points for the final score of 66-64.

Outstanding players for Chelsea in addition to Farley, were Winland, Stoffer and Charles Schmunk with nine points each; Dick Lauson with 10 points and a Cameron.

High point man for Dexter was Arch Bradley who scored a total of 24 points and pulled down a considerable number of rebounds. Dexter's Ron Mull scored 14 points and Doug Dunham, 11 points.

Chelsea Bulldogs and their coach, Terry Pokela, formerly at (Continued on page six)

## Holiday Cage Tournament Opens Friday

The annual Christmas Basketball Tournament begins at Chelsea High school gymnasium Friday, Dec. 27.

Contests scheduled for the first day pair the following:

4:30 p.m.—Brooklyn vs. Stockbridge.

6:15 p.m.—Jackson St. Mary's vs. Leslie.

8:00 p.m.—Chelsea vs. Manchester.

9:45 p.m.—Coment City vs. Grass Lake.

The second series will be played at the same hours on Saturday and the championship match will be played at 9:45 p.m. Monday, Dec. 30.

Monday's schedule also includes games at 4:30 p.m., 6:15 p.m. and 8:00 p.m. preceding the championship contest.

The Edwin Greenleaf family spent the week-end at Elkton, visiting relatives there.

## Early Edition Planned for Next Week

School let out for a long holiday. The Standard will be printed earlier next week in order to have it in the mail Tuesday morning.

Because of the early publication date all news copy must be in the office as early as possible, the deadline being 5 o'clock Saturday. Classified ads will be accepted until 5 p.m. Saturday and display advertising should be in the office by noon Saturday.

Co-operation in helping the staff meet these deadlines will be much appreciated.



**KEY CLUB CHARTER MEMBERS**—Present Thursday evening for Charter Night ceremonies of the newly-organized Key club, sponsored by the Kiwanis club of Chelsea for high school age boys, were, front row, from left, Edwin Greenleaf, Kiwanis Key club committee chairman, Neil Packard, Dick McCalla, David Priest, John Hand, Jim Cameron and David Frisinger; second row, also from left, Fred Mills, who is one of the faculty advisors, Bob Snyder, Oren Wireman, Gordon Beeman, Lynn Harvey, John Huelsberg and Richard Donley, another faculty advisor; third row, same order, Charles Schmunk, Greg Kuhl, Douglas Sprague, Hartmut Henning, David Blass and Barry Visel; fourth row, Vic Parks, Ken Lofquist, John Bowling, Jim Knott, Bob Kushmaul and Tom Sharrard; and top row, Dave Wood, Joe Fisher, Jerry Manzel and Dave Adams.

## Gifts By Many Help Provide Christmas for Unfortunate

One hundred children and 55 adults will have a happier Christmas this year because of the generosity of individuals and groups co-operating with Chelsea Social Service in the annual project of providing food and gifts to those who for various reasons are unable to provide any extras for the holiday for themselves and/or their children.

Boxes of food, plus a check for the purchase of fresh meat is the standard contribution for each family. Where there are children, toys are also included.

Mrs. Louis Ramp, Chelsea Social Service director, said this week that this year there were more toys than ever—they are, for the most part, toys collected in a used toy drive early in the year sponsored by the Chelsea JCC Auxiliary. The toys are taken to Cassidy Lake Training School where the school's shops go into action restoring them to "like new" condition. After the repair and reconditioning of the toys is completed, the JCC Auxiliary brings them back to town and turns them over to Chelsea Social Service.

Chairman of the toy project this year was the JCC president, Mrs. Gene Shumaker, and Mrs. George Ellenwood.

A "toy shop" was set up, as is customary each year, on the Saturday before Christmas, and families are invited to come in and pick out toys for their children.

Most families also pick up their Christmas boxes of food at this time, as well.

The large quantities of canned goods needed for distribution at Christmas time are received from a number of sources—a collection staged by Junior and Senior High school students and others collected by Modern Mothers Club, Study club, Young Mothers club, Wide Awake 4-H club, Christian Action Circle of St. Paul's church, Club 15, Catholic Youth Organization (CYO) of St. Mary's parish, and individuals.

Club 15, a group of youngsters, brought in canned goods for Thanksgiving and Christmas, as well as used toys and clothing.

Chat 'n' Scam of the Congregational church contributed a variety of items including gifts, candy, wash cloths, towels and cash; Ruth-Naomi chapter of the church supplied a large box of wrapped candies for the Christmas boxes; the UAW-CIO sent 48 Christmas stockings filled with candy; Troop 82 Junior Girl Scouts donated washcloths and soap; the High School Latin club brought in \$20 for the needy; the Junior Chamber of Commerce selected a family for whom the organization accepted responsibility of providing holiday gifts.

The list continues with the FWW

## Chelsea High School Key Club Chartered Thursday Evening

### Gift Package Claimed After Label Is Lost

A Chelsea resident's mother in Sabetha, Kan., will get her Christmas gift from him in time for the holiday, in spite of the fact that, at one time, it appeared doubtful.

The package, originally mailed and insured at Chelsea on Dec. 9, was returned from Chicago after the address label had become lost enroute from Chelsea to Chicago.

The contents of the package were intact but there was no identification; the insurance receipt number was all that was known.

The Standard, in the Dec. 19 issue, carried a notice that the package had been returned here, as announced by Postmaster Carl Mayer.

In the meantime, the loose label had been discovered in Chicago and mailed to Richard Funderburgh, stating merely that it had been found apart from the package and Post Office Friday morning.

Funderburgh came to the Chelsea Post Office Friday morning to ask how he should go about locating it; he was most pleasantly surprised to be greeted with the news that the package was safe here, awaiting identification.

Funderburgh took the package home to re-pack it and sent it on its way that afternoon by airmail. He feels sure it will arrive in time for Christmas in spite of the 11-day delay.

## Service Club Organization for Youth Sponsored by Kiwanis Club

The Key Club of Chelsea High school, sponsored by the Kiwanis Club of Chelsea, held its charter night at the Chelsea High school cafeteria Thursday evening, Dec. 19.

Among state representatives present for the occasion were Walter Gempferling of Plymouth, 1964 lieutenant governor, elect of Kiwanis Division VI; James Fullerton of Jackson, lieutenant governor of Key clubs' Division VIII; State Key club treasurer, David Davison of Jackson; Del Borgsdorf, international vice-president of Key Club International; and Dave Leeke, past chairman of the Michigan District Key Club.

Jack Thompson, lieutenant governor of Division VI, presented the charter to the newly-organized Chelsea Key club. Accepting for the Chelsea club was John Hand, the new club's president.

Borgsdorf officiated at the installation of officers and also presented membership certificates and pins to the charter members of the Chelsea club.

Presiding at the Charter Night program was Robert Daniels, president of the Kiwanis club of Chelsea.

Wallace Wood, president-elect of the Chelsea Kiwanis club welcomed those present. Steve Beinman, governor of Michigan District of Key clubs, welcomed the new Chelsea club into membership; Charles Cameron, superintendent of schools spoke briefly and Dave Leeke, past chairman of the Michigan Key club, gave the charter address.

The opening invocation was given by the Rev. Fr. Francis Maliszewski, pastor of St. Mary's Catholic church, and the benediction was pronounced by the Rev. James Craig, pastor of the Methodist church.

Others participating in the Charter Night program included Paul F. Niehaus, Kiwanis chairman of the music committee, and Edwin Greenleaf, chairman of the Chelsea Kiwanis club Key club committee under whose leadership the new club was organized.

Faculty advisors of the new Key Club are Richard Donley, Fred Mills and Jack Weiss.

Charter members of the Chelsea Key club are Ken Lofquist, John Bowling, Jim Knott, Tom Sharrard, Bob Snyder, Oren Wireman, Gordon Beeman, Lynn Harvey, John Huelsberg, Charles Schmunk, Greg Kuhl, Douglas Sprague, Hartmut Henning, David Blass, Barry Visel, Dave Wood, Joe Fisher, Dave Adams, Neil Packard, Dick McCalla, David Priest, John Hand, James Cameron, David Frisinger, Vic Parks, Bob Kushmaul, Jerry Manzel, Mike Schrader, Bill Marsh, Dave Dietle.

The list continues with George Gary, Dick Lauson, Tom Powers, Jay Livingston, Jack Crawford, Curt Farley, Jim Hanson, Mike Hitchingham, Carl Loeffler, Warren Porath, Ken Reinhardt, Scott Smith, Larry Wengren, Ed Windell and Dan Salzer.

Officers of the new Key club are John Hand, president; Dick McCalla, vice-president; Dave Priest, secretary; and Jim Cameron, treasurer.

Meetings are held every two weeks and the entire club set-up follows the pattern of Kiwanis clubs.

## FFA District Meeting Held at Saline High School

Nine Chelsea High school Future Farmers of America members were initiated as "Chapter Farmers" and six as "District Farmers" at the FFA District meeting held at Saline Wednesday evening.

Those who had completed requirements for the chapter farmer award are Robert Kushmaul, James Bristle, Jim Grissom, Doug Young, Dave Clark, John Fullerton, David Brand, Ben Staphish and Dave White.

Those receiving the district awards are Jim Walter, Dan Elder, Ken Reinhardt, Bill Wenk, Dick McCalla and Don Hindere.

Entertainment at the meeting included a Walt Disney movie, "Beaver Valley."

Seven schools were represented at the district meeting—Milan, Manchester, Chelsea, Dexter, Saline, South Lyon and Clinton.

Fifteen FFA members of the Chelsea chapter attended, accompanied by FFA Advisor Gary Jackson.

Carlton Hafley, who underwent surgery at St. Joseph Mercy Hospital, Ann Arbor, the previous week, returned home last Saturday.

## March of Dimes Committees Named By Chairmen

Mrs. William Marsh and Mrs. William Adams, Chelsea co-chairmen of the January March of Dimes campaign, have announced the following committee chairmen:

Mrs. Leo Bishop, Mothers March; Nancy Luick and Ann-Marsh, canisters; Mrs. Wilber Worden, mailers; Elmer Kiel, peanut sale; Mrs. Harold Pennington, St. Mary's school; R. V. Worden, bowling; and Mrs. Donald Baldwin, publicity.

Mrs. Ward Viary and Mr. and Mrs. Branch Viary, of Leslie were recent evening callers of their cousins, Mr. and Mrs. Walter Viary and daughter, Mrs. Annabelle Woolley.

## Story Hour for Children Slated at McKune Library

Friday, Dec. 27, from 3 until 4 o'clock in the afternoon is the date for the annual children's story hour at McKune Memorial Library. All children of the community are welcome to attend.

The library will be closed all day Christmas day and all day New Year's day.

## Standard To Publish Babson's Business, Financial Forecast

The Chelsea Standard will publish "Babson's Business and Financial Forecast" for 1964 in next week's issue to be mailed Tuesday, Dec. 31.

A careful checking of the Babson Predictions made in the Business and Financial Forecast for 1963 upholds the remarkable average of the past years by being 84 percent correct! It holds the best and highest record for Annual Forecasts on U.S. Future Business.

Watch for Babson's Business and Financial Forecast for 1964 in our issue of Jan. 2 (next week).

## Personal Notes

Miss Nina Greening left Saturday for a two-week stay in Florida.

Mrs. Cornelius Kasonchuk returned early Monday after spending several weeks in Florida.

Mrs. Roy Miller entered St. Joseph Mercy Hospital, Tuesday, Dec. 17, for minor surgery. She returned home Friday.

Present Sunday evening for a holiday family gathering at the home of Mr. and Mrs. Willis Hoydauff were Mr. and Mrs. William Nelly and family, of Ann Arbor; Mr. and Mrs. Alva Pouty, Mr. and Mrs. LaVerna Hafley and family, Mr. and Mrs. Albert Hafley and family and George Hafley and son, Carlton, Mr. and Mrs. Paul Beal and family, of Brighton, were guests Sunday afternoon.



## Christmas Program Precedes Vacation

St. Louis School for Boys held special Christmas program Saturday afternoon as the final activity prior to the Christmas vacation.

All boys at the school left in their parents' and will return for the re-opening of school Jan. 6.

The program included a play "The Littlest Angel" by the younger boys; the Annunciation scene by older boys; and shepherd and wisdom scenes, also by older boys at the school.

Costumes were made by the Sisters at the school and the stage properties were the work of Father Umberto.

The school's band and chorus performed, presenting appropriate Christmas music. Father Umberto played the accordion and Father Germano, the baritone horn as band accompaniment.

Student priests from St. John's Provincial Seminary and Sacred Heart Seminary in Detroit were present for the program; Sisters of St. Mary's school in Chelsea also were present as well as guests from the Chelsea area and parents and families of the students.

Howard Moody, Ronnie Catlin, Jamie Dolik and Bobby Lavierle, all of Detroit. The life-like camel figures, as well as all stage props, were the work of the Rev. Father Umberto Mellare.



ROCKING HORSES, toy autos, games, dolls and accessories — anything any child could wish for in the line of toys, was on display Saturday in the Sylvan Town Hall where area families on Chelsea Social Service lists were invited to make their own selection. Present to assist Mrs. Louis Ramp, (second from left) Chelsea Social Service director, in setting up the display were, from left, Mrs. George Ellenwood, Mrs. Arthur Patterson, Mrs. David Colquhoun and Mrs. Gene Shoemaker. Mrs. Ellenwood and Mrs. Shoemaker were acting as representatives of the JCC Auxiliary, while Mrs. Colquhoun and Mrs. Patterson were working as representatives of Chelsea Social Service. Mrs. Shoemaker and Mrs. Ellenwood were co-chairmen of the used toy drive of the JCC Auxiliary which this year provided "more toys than ever." The toys were renovated by Cassidy Lake Technical School workers to like new condition.



Established 1871 **The Chelsea Standard** Telephone GR 5-3581  
General Excellence Award by Michigan Press Association  
1951-1953-1955-1959-1960  
Walter P. Leonard—Editor and Publisher

Published every Thursday morning at 301 North Main Street, Chelsea, Mich., and second class postage paid at Chelsea, Mich., under the Act of March 3, 1879.

Subscription Rates (Payable in Advance):  
In Michigan: One Year \$3.00 Six Months \$1.75 Single Copies \$ .10  
Outside Michigan: One Year \$4.00 Six Months \$2.25 Single Copies \$ .10  
Service men or women, anywhere, 1 year \$3.00

NATIONAL EDITORIAL ASSOCIATION  
AMERICAN NEWSPAPER REPRESENTATIVES

# EDITORIAL THOUGHTS

## Religious Significance of Christmas Often Overlooked

The Christmas season always brings back the sweetest memories of youth to those who enjoyed the fantasy and sparkle of the Santa Claus story. In addition, it brings a more significant observance, a respect of the Christian principles of life, which are all too often forgotten in the rush of modern everyday living.

The real Christmas spirit is one of unselfishness and giving. Thus, the people who enjoy the scene around the Christmas tree, on Christmas morning, and the emptying of stockings, more than the children, are the mothers and fathers who watch this exciting moment each year.

As Christmas day, 1936, approaches, the time seems highly appropriate for a new dedication to Christian principles. The United States, of all the countries in the history of the world, today enjoys more blessings and more of the good things of life than any other nation. Yet, we live in troubled times.

As a nation, we must hope and pray that we will survive the modern crises as we have those in the past, and we have every reason to believe we will.

Meanwhile, as we pause briefly to observe and enjoy the Christmas holiday season, it is well to renew our hope that there will, some day, somehow, be peace on earth and good-will among all men.

## Merry Christmas to All

The age-old greeting of "Merry Christmas and Happy New Year" still retains its youthful zest and continues to express the best wishes to good friends.

We make no apology for using the ancient phrase in extending holiday greetings to our readers and friends. If you are MERRY, as we wish you to be, you will enjoy the holiday season as friends and loved ones surprise you with evidence of their affection and as you experience the contentment of a well-satisfied inner-person.

If you are HAPPY, as we hope you will be, you will have shared the Christmas spirit in the giving of yourself and your substance to others, not only in the few days of the holiday season, but throughout the year behind you.

To be both MERRY and HAPPY in this world of ours, one must enjoy the material and experience the spiritual. One must be well in body, satisfied in mind and aglow in spirit.

So, now you understand why we say to you, simply and sincerely: "A Merry Christmas and a Happy New Year."



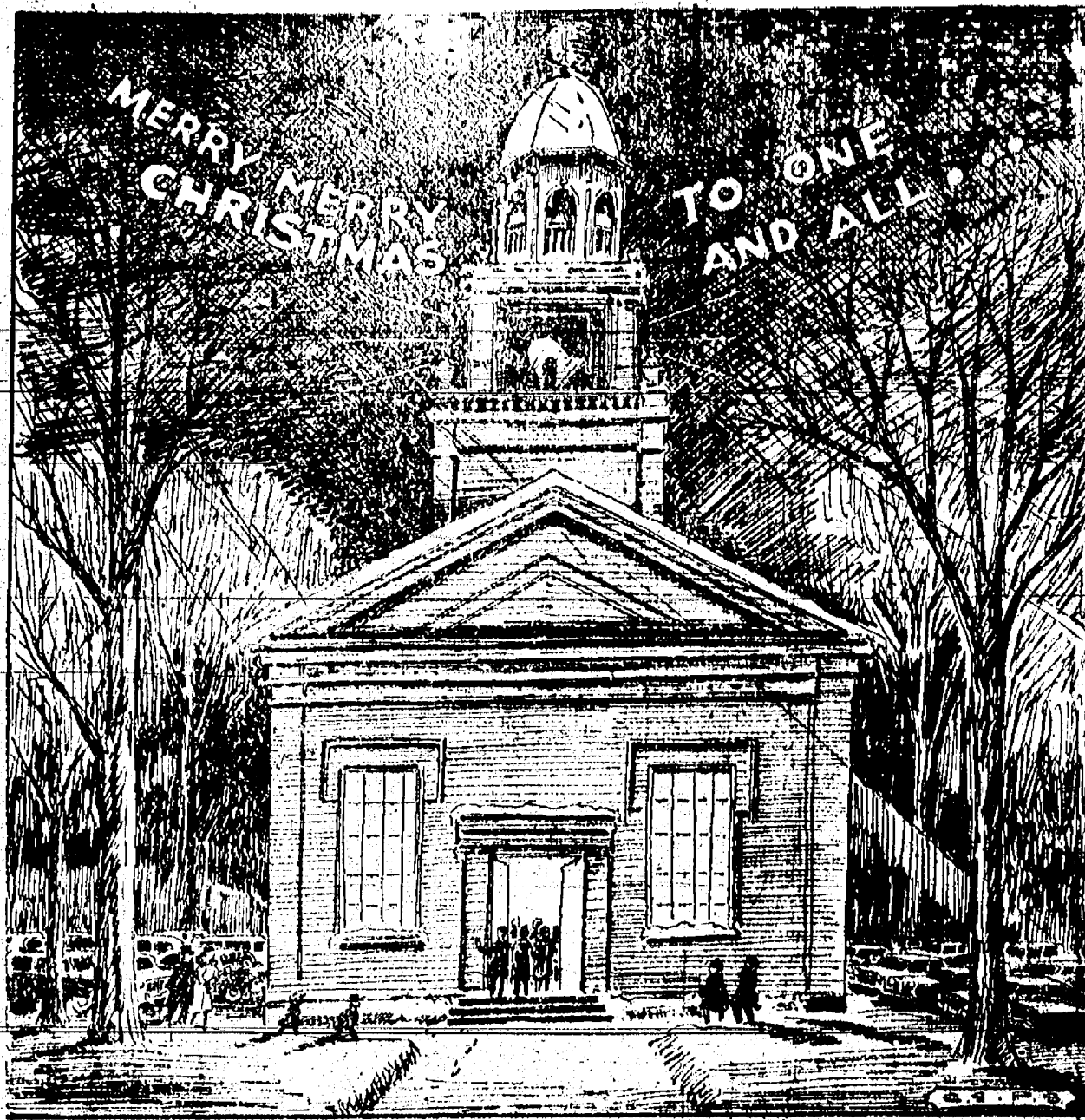
## MAGIC MIRROR BEAUTY SALON



We're wishing all of you every joy of the Holiday Season. May your days be merry and bright... serving you has made ours a delight!

## WESTERN AUTO FAMILY STORE

## RING OUT THE GLAD MESSAGE



## MICHIGAN MIRROR

By Elmer E. White, Secretary, Michigan Press Association

**Tightening the Belt**  
The call by President Johnson for tightening the belt on U. S. Government expenditures rings a familiar bell.

Michigan's agency heads have been under similar orders since the beginning of the now famous cash crisis. The orders have not changed even now, when the prospect of a surplus is within close reach.

Shortly after he took office Gov. George Romney said he wanted to be assured Michigan taxpayers were getting a dollar's worth for every dollar spent.

Quite some time before Romney became Governor, it should be noted, several legislators were shouting about the state's expenditures.

Rep. Harry De Maso, Battle Creek Republican, was one of the more vocal of these. As each new tax was proposed during the late 1930's, De Maso had the same thing to say: "Tax problems exist because of decisions to spend and grows more rapidly than existing tax bases. Both the level and the trend of spending, but especially the latter, determines the size of the problem."

De Maso's solution to the annual calls for new taxes to meet spending demands is a simple one. "It is time we all took a good look to see if the (spending) barrel has a bottom, for from the taxes that have already been levied and spent it seems the barrel is bottomless," he said.

Careful, tedious studies of spending and agency management in the past year or two have indicated there are many areas where savings could be accomplished.

These studies are yet to be fully implemented but it appears progress will be made. Most of the areas noted represent savings of only a few thousand dollars per agency but multiplied by the number of agencies in operation, it could mean a substantial amount of funds could be eliminated from the state's budget or put to areas of real need.

Substantial or not, the maxim of "A penny saved is a penny earned" applies to state and federal governments just as it does to individuals.

### Ten-Year-Review

A new phenomena is taking place in state government, but it will be repeated every decade in the future.

The new Constitution provides for decennial apportionment of the state legislature to be accomplished by an evenly divided bi-partisan commission named by the major political parties.

The first commission operating under the apportionment provision has been at work for several months. By the end of January the eight-man group hopes to have an apportionment plan ready.

A deadlock appears likely even though the method of dividing the 110 House seats and 34 Senate seats is spelled out in the Constitution.

The four Democrats on the commission, of course, want to vote the district plans so their party can gain seats in the legislature. Republicans, who have held the majority in both houses for many years, are eager for their four commission members to maintain this edge.

The national trend appears to be giving city delegations a greater portion of representation.

Failure to agree on a plan by the self-imposed deadline would mean the commission's job goes to a higher level, the State Supreme Court.

This possibility would appear to favor the Democratic viewpoint in two ways. First, after the start of the year, Democratic-nominated judges will hold five of the eight high court posts.

Second, this national trend is largely being set in courts across the land and there is no indication that this state's highest tribunal would take a position in opposition to the trend.

The reversion of the commission's responsibility to the Supreme Court and the prosper of developments there could well give Republican commission members a strong desire to settle it themselves, holding as much as they can but giving some small measure to their political counterparts.

Shareholders will be asked to vote on the 10 percent dividend at the bank's annual shareholder meeting Jan. 21. Ann Arbor Bank shareholders approved a 10 percent stock dividend less than a year ago, on April 18.

As was done at that time, the intent would again be to maintain the same annual cash dividend of \$2.00 per share. Foster stated that the stock dividend proposal results from the bank's continuing growth and prosperity.

A fanatic is simply an individual who knows that he is right.

On account of this being the Yuletide season with Christmas right around the corner, the fellers at the country store Saturday night was handling matters in the spirit of peace on earth and good will for everybody.

Even Ed Doolittle, that gets a skin rash every time you mention the New Frontier, had a kind word to say for President Johnson. He reported where the President had took up golf again and was hitting the ball with more vigab since his wife give him a box of balls with "Barry" stamped on 'em.

Zeke Grubb was commenting on how Christmas has swapped ends in the last 30 years. Zeke allowed as how it was hard to find a young'un no more that believed in Santa Claus but now that the Government was operating on the give-away plan, the voters kept a stocking hanging by the chimney year round and checked it twice a day.

There was a heap of truth, Mister Editor, in what Zeke was saying. For instant, I was reading in the papers where a candidate for Congress from Georgia was promising the voters he'd git 'em bigger old age pensions, a free cancer clinic, more training for trade schools and handicapped children, expansion of the welfare and public health departments, more aid to cities, more farm research, increased strength for the

highway patrol and development of mountain scenery—and no new taxes. He'll run into few stumps in the road from voters that knows how to add, and subtract, but he'll make the journey in good shape and win by a landslide.

Bug Hookum told the fellers he aimed to make a New Year's resolution not to discuss politics in 1937. Bug allowed as how it was mighty hard for him to git on this subject without expressing himself in unreligious language and he had promised his preacher he'd do a little better along this line. Farthermore, claimed Bug, they wasn't no issue in the 1934 elections is good, the Republicans will say things is bad, and the one that hollers the loudest has the best chance to win.

Clem Webster announced he would git around to 1934 at the proper time, that he had no big complaints for 1933 and that the folks that was hollering was bit by their own dogs.

Personal, Mister Editor, I'm willing to let 1933 go out in peace. My money is talking like it was about exhausted but I've had good health and ain't needed none of that medicine for the aged or physical fitness for the young.

A Merry Christmas to you and to all your readers and advertisers.

Yours truly,  
Uncle Lew

## JUST REMINISCING

Items Taken from the Files of The Chelsea Standard

### 4 Years Ago...

Thursday, Dec. 31, 1932—The annual March of Dimes kick-off dinner will be held Thursday at the Moose Lodge, Ann Arbor. Expecting to attend from Chelsea are the general chairman, Mrs. John Kousch, and committee chairmen as follows: Mrs. George Ellenwood, Mrs. William Marsh, Mrs. William Adams, Mrs. A. D. Mayer and Mrs. Charles Lancaster.

Married at 1 p.m. Monday at St. John's Catholic church, East Lansing, Marlene Kuhl, daughter of Mr. and Mrs. Arthur Kuhl, and John Howe, son of Mr. and Mrs. Robert Howe.

Eight teams are entered in the Chelsea Holiday Basketball Tournament—Vandercook Lake, Pinckney, South Lyon, Brooklyn, Seline, Napoleon, Jackson St. Mary's and Chelsea.

### 14 Years Ago...

Thursday, Dec. 29, 1922—Chelsea High school got off to a good start in the Albion College Invitational Basketball Tournament Tuesday night as they drubbed their football nemesis of last season—Parma High—by the lopsided score of 52-28.

Twenty-one students from Chelsea are attending the University of Michigan—Hilarion Bileoff, Harrie Blecker, Lawrence Bohall, Beverly Booker, Robert Breitenwischer, Robert Daniels, Barbara Eaton, Joseph V. Fisher (most graduate), Robert Gillette, Frank Kenney, Leon Ludwig, Thomas Lyons, Harold Martin, Loren Munro, Paul J. Niehaus, William Rademacher, Albert Reed, Paul G. Schalle, Jr., Lewis P. Vogel, John R. Wellnitz and John C. Winans.

Mrs. Inez Kuch left Tuesday to spend a week with Miss Ruth Blanchard at Benton Harbor.

### 24 Years Ago...

Thursday, Dec. 28, 1912—Edwin Lantis and Anne Lambert, reporters for the sixth grade list those who told the class Christmas stories as follows: John Wehnitz, June Vail, Robert Paber, Myra Townsend, Joanne Shutes, Bobby Robbins, Leroy May and Caroline Breitenwischer.

The Ladies Aid of Salem Grove M. E. church will serve a chicken dinner in the church dining room on New Year's day. Price: 60 cents and 25 cents.

Mrs. D. E. Beach and son, David, left Saturday to spend Christmas at Port Hope, Md., with Lt. and Mrs. Dwight Beach and family. Miss Virginia Everham of Port Huron is spending Christmas with her sister, Mrs. E. W. Eaton and family.

### 34 Years Ago...

Thursday, Dec. 26, 1902—The Red School PTA had a Christmas program and pot-luck supper Tuesday at the home of Mr. and Mrs. William Pritchard. The program was in charge of Mrs. E. S. Kennedy and the teacher, Leone Eagan. Among the numbers on the program was a quartet, "Don't Count Your Chickens Before They Are Hatched" by Henry Orthing, George Steele, Louis Grossman and Joseph Merkel; a recitation, "Not Letting on" by Waldemar Grossman; a recitation, "If I Were a Policeman," by Peter Jaskot; and a recitation, "A Wonderful Christmas" by Monica Merkel.

Two of the fastest teams who ever played basketball on the Chelsea High school floor will meet Friday, Dec. 27, in a holiday season game. Arnold Fahrner will captain a team composed of Steiner, Weber, Dancer and L. Steger, while Arnold Steger will captain the opposing team with some of the best material ever to wear the school colors—Fox, Faust and David and Dwight Beach.

Jerusalem school held its Christmas program Monday evening. Included among those taking part were William Thomas, Alice, Theodore and Nora Jean Quigley, Paul and Earl Koch, Joyce and Janice Bollinger. The teacher, Dorothy

Mrs. Austin Artz was a patient for several days at an Ann Arbor hospital where she underwent minor surgery.

Mr. and Mrs. Clarence Lehman were Sunday afternoon callers of Mr. and Mrs. Ed Hoffman.

Mrs. Leonard Loveland was a Monday evening supper guest of her son and his family, Mr. and Mrs. Leroy Loveland. In the morning they attended a program at the Methodist church—Grass Lake. After the program they called at the home of Mr. and Mrs. Dale Loveland and family.

Harley Loveland of Farmington was a Thursday caller of Mrs. Leonard Loveland.

Mr. and Mrs. Dillman, who were Friday evening callers.



## HERBERT L. PAUL

Plumbing, Heating and Well Drilling



May the inspiration of the first Christmas abide with you throughout this holiday season and for many years to come.

## CHELSEA GREENHOUSES

We Deliver Locally - Send Flowers By Wire Anywhere in the World

7010 Lingane Road

MEMBER F.T.D.

Phone GR 9-6071



## Freeway Ends Bottleneck

**Western Michigan**  
Lansing — Nearly six miles of 196 between Holland and Saugatuck was opened to traffic recently. The new freeway, which also is named as US-31, replaced a narrow two-lane highway—one of the worst traffic bottlenecks in Western Michigan.

With the opening of this section of freeway, the entire route between Muskegon and the Michigan-Indiana line is a divided four-lane highway with the exception of five miles through Saugatuck and Douglas.

The final section of freeway around those two communities will open to traffic early next summer.

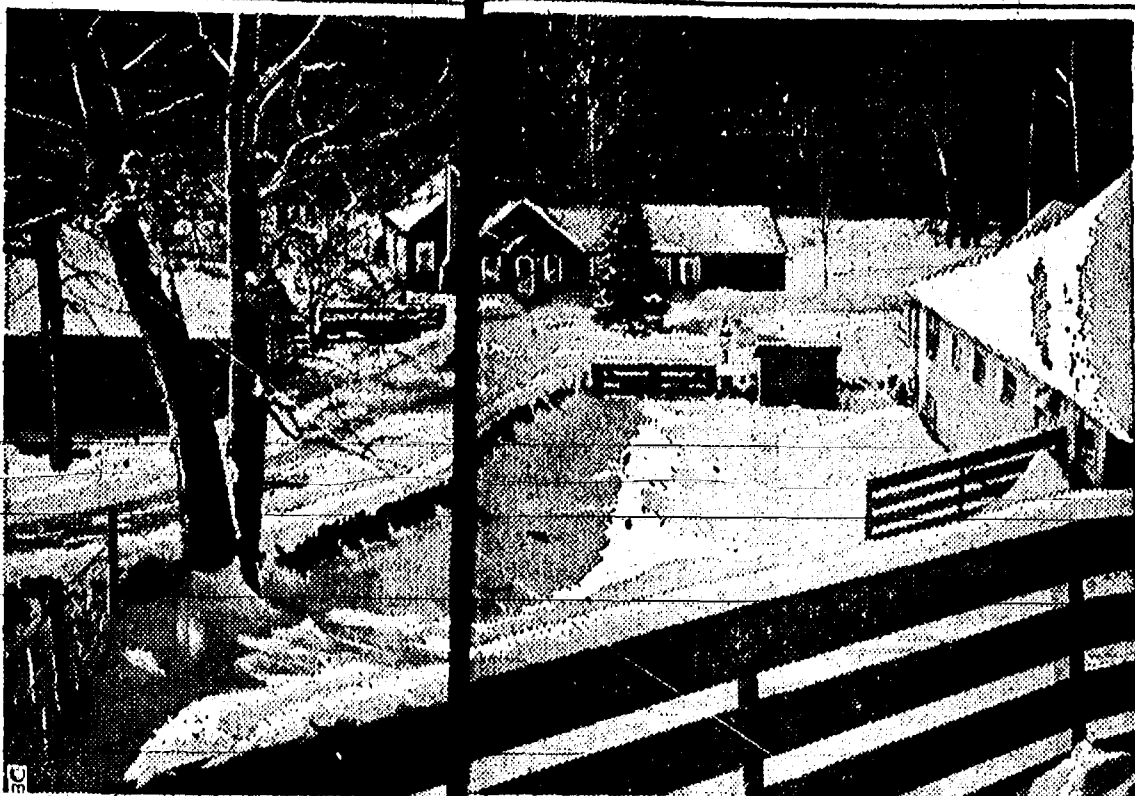
## BIBLE VERSE TO STUDY

"Follow peace with all men, and holiness, without which no man shall see the Lord."

1. Who made the above statement?
2. To whom was he writing?
3. Of what race was the author?
4. Where may this statement be found?

(Answers on page six)

A little courtesy, behind the wheel may some day save you a trip in a hearse.



## Snow Scenes Associated With Christmas everywhere

Where the sun shines bright, the air is balmy and never is heard the discouraging howl of a blizzard, Christmas is still a winter wonderland.

In northern climes the plaint is, "We just don't have snow for Christmas the way we used to," and even in climates where decorated palm trees substitute for evergreens and holiday picnics are more likely than sleigh rides, snow and plenty of it seems an essential part of the vision of the Yuletide.

Country snow scenes are popular greeting card subjects and Christmas illustrations in Southern states, South American countries and many other places where snow seldom or never falls. Songs and stories tell of a Christmas world wrapped in wintry white.

**It Was Rainy Season**  
The popularity and persistence of the "winter wonderland" idea seems more remarkable, since "snow for Christmas" must have been improbable, if not impossible, as a part of the Holy Night. Rain was more likely, especially on the date officially celebrated as Christ's birthday, Dec. 25 is right in the midst of the rainy season in Bethlehem.

Early art depicting the Nativity and the events following it was faithful to the probabilities. In these paintings, the shepherds watched in fields free of snow, and the Holy Family fled to Egypt under sunny skies, their route marked by palm trees. Later, snow appeared in paintings of the Holy Night.

**White Means Purity**  
Part of the explanation may be that white, rather than red and green, was early chosen by churches as the color of Christmas. White is, of course, the symbol of purity and innocence, and a landscape white with snow thus

became a proper expression of the spirit of Christmas.

Other explanations may be found in the origins of Christmas customs. Many of the pagan rites which absorbed into the Christian celebration came from Northern Europe and, if not associated directly with snow, at least reflected the need for warmth in winter.

The Yule-log, for instance, became part of the early Christmas and certainly an open fire indoors enhanced by a blanket of snow outdoors.

**Had Snowy Source**  
Color, too, that a number of modern Christmas customs — the

tree and its lights, for instance — came from Germany, where cold, snowy winters might logically contribute to the legends and lore of the season. The first lighted tree was, supposedly, created by Martin Luther as a symbol of a starry sky on a snowy night.

In modern times Irving Berlin and Bing Crosby have substantially strengthened the vision of a "White Christmas." Bing singing Berlin's famous song is now a traditional part of the Yule season.

While many, perhaps most, people may be able only to dream of a white Christmas and create its semblance with cotton or spray-on snow, it's a safe assumption that the happiest season will continue to be envisioned as a snowy winter wonderland.

## TODAY AND TOMORROW

By Rolf Hordester, Feature Editor TV Guide Magazine

**HOARD DUFF** plays the father of a musical child prodigy (Mimi Pettit) in an Eleventh Hour gem, "Halfway Up The Stairs." On an upcoming Don Reed Show, titled "First Additions," Donna and her showhusband, Carl Betz, reminisce about the birth of their first child. Then, in a dash back their obstetrician comes on the scene. Guess who? Dr. Zerk (Sam Jaffe) of Ben Casey. Jaffe's wife, Bettye Ackerman, plays one of her rare TV roles outside Ben Casey opposite Robert Ryan in "Better Than a Dead Lion Breaking Point."

**Alumni Fun** returns as a Sup show on CBS in January, from 6:30 p.m. (EST) but will stay that spot until basic business of the Week resumes in fall.

**ZSA GABOR** joins The Jock Bishop Show for "Redeeming Nursery." World Heavyweight boxing champion Sonny List makes his acting debut in "Day of a Fighter," a Bob Hope Show written especially for TV by Bud Schulberg, author of "The Hat They Call." Richard Basehart will star in that 20th Century series, Voyage to the Bottom of the Sea. Sidney Carroll, the writer, Charles Boyer, stars in "The Louvre."

**COMING UP IN COLOR ON CBS** The Tournament of Roses Parade on New Year's Day and segments of Judy Garland's "Wizard of Oz" movie on Jan. 26. CBS also has on the shelf a Royal Hunt show filmed last year in England which could be colorized, but no decision has been made, pending sale to a sponsor. Official

CBS policy on color as of now: No outright green light, but a gradual increase as the public demand goes up. Barry Sullivan (The Tall Man) has been signed by MGM to star in its Grand Hotel series project for NBC. Sullivan runs the hotel in the series, based on the classic 1932 movie of the same name. The pilot is being shot on location in San Francisco's Fairmont Hotel.

## WHO KNOWS?

1. Who was king of England during the Revolution War?
2. What significant historical event took place on October 19, 1942?
3. Name three presidents who had birthdays in December.
4. Who is the American Ambassador to Moscow?
5. Prior to the recent burial of President John F. Kennedy, who was the only other President to be buried in Arlington National Cemetery?
6. How old is President Lyndon Baines Johnson?
7. Was Arlington County, across the river from Washington, formerly a part of the District of Columbia?
8. When do the days begin to get longer?
9. Where may one find the statement, "Blessed is the nation whose God is the Lord?"
10. Approximately how many nations and international agencies were represented at President John F. Kennedy's funeral?

## CHICKEN WAR OVER

The year-old chicken war between the United States and the European Common Market ended when President Johnson ordered sharp tariff increases on brandy, trucks, dextrine and potato starch. This action was to compensate the United States for \$26 million of poultry exports affected by the Common Market levies.

## NEWS HOLLYWOOD

A blood clot in Bob Hope's left eye, which is causing fuzziness of vision, may halt his annual Christmas visit to U.S. troops stationed overseas this year.

Actress Suzanne Pleshett is proudly showing off her engagement ring that Troy Donahue gave her. They plan to be married January 4, in Beverly Hills.

## "FUN IN ACAPULCO"

Elvis Presley is singing and swinging again in "Fun in Acapulco." There are lots of pretty girls in lovely evening dresses and daring bathing suits. Elvis gives you a bargain in song and his original version of the twist not seen since his third or fourth movies.

In the story, Elvis is in Mexico trying to reconcile himself to his brother's death. Both were trapeze artists, but somehow Elvis feels he was responsible for his brother's death while performing their routine act on the trapeze.

Presley is employed singing as a Gingo in a night club and during his off hours substitutes as a life guard at a hotel pool. There's not too much time left for reflection — he keeps busy with his two jobs — not to mention a social director (Ursula Andress) and a lady bullfighter (Elsa Cardenas). When a lady bullfighter decides on a man, you can bet there's plenty of action in store for the movie goer.

## ONE-MINUTE SPORTS QUIZ

1. Who won the Auburn-Alabama football game?
2. Who won the Harvard-Yale game?
3. Who is Willie Pastrano?
4. Who is Navy's now-famous football quarterback?
5. What two teams meet in the Rose Bowl January 1st?

(Answers on page five)

## AWARDS GOOD DRIVERS

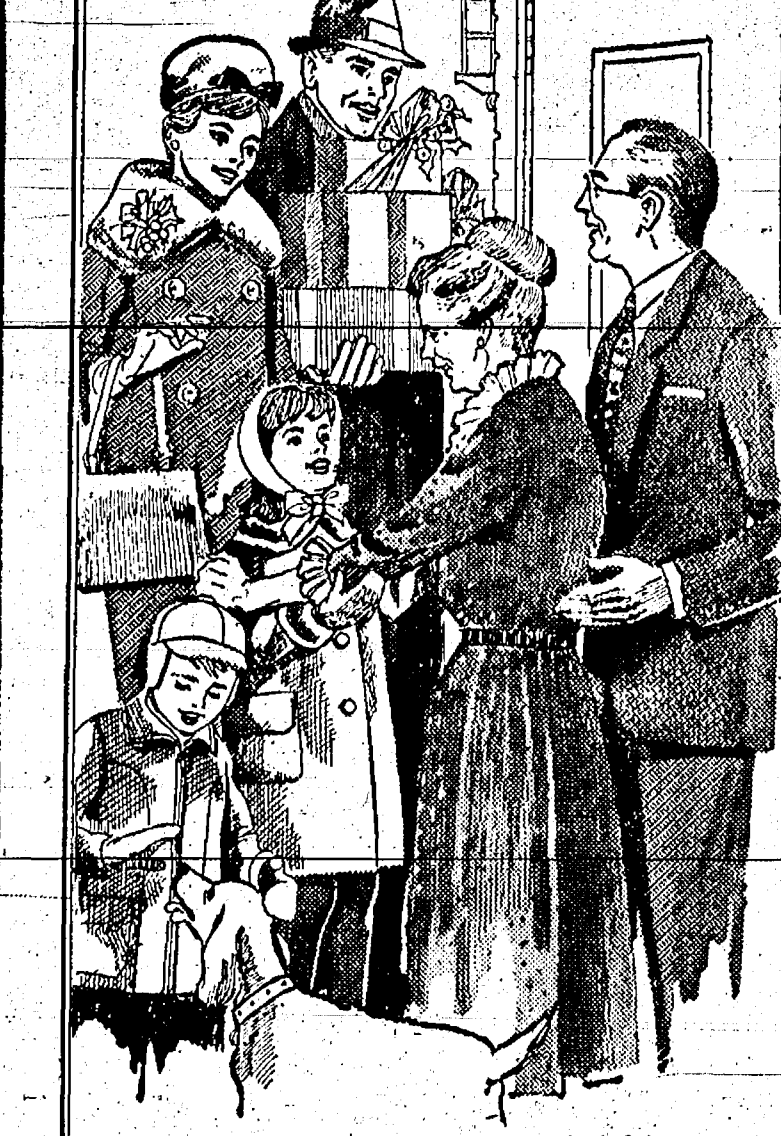
St. Louis — Motorist in the suburb of Florissant are surprised when the police stop them and give them 2 tickets to a local theater. Drivers are awarded the tickets for well-mannered driving. It is a driving courtesy program promoted by the Junior Chamber of Commerce.



**JOY**  
Our warmest wishes for a happy holiday.

**Lloyd's Dairy Bar**

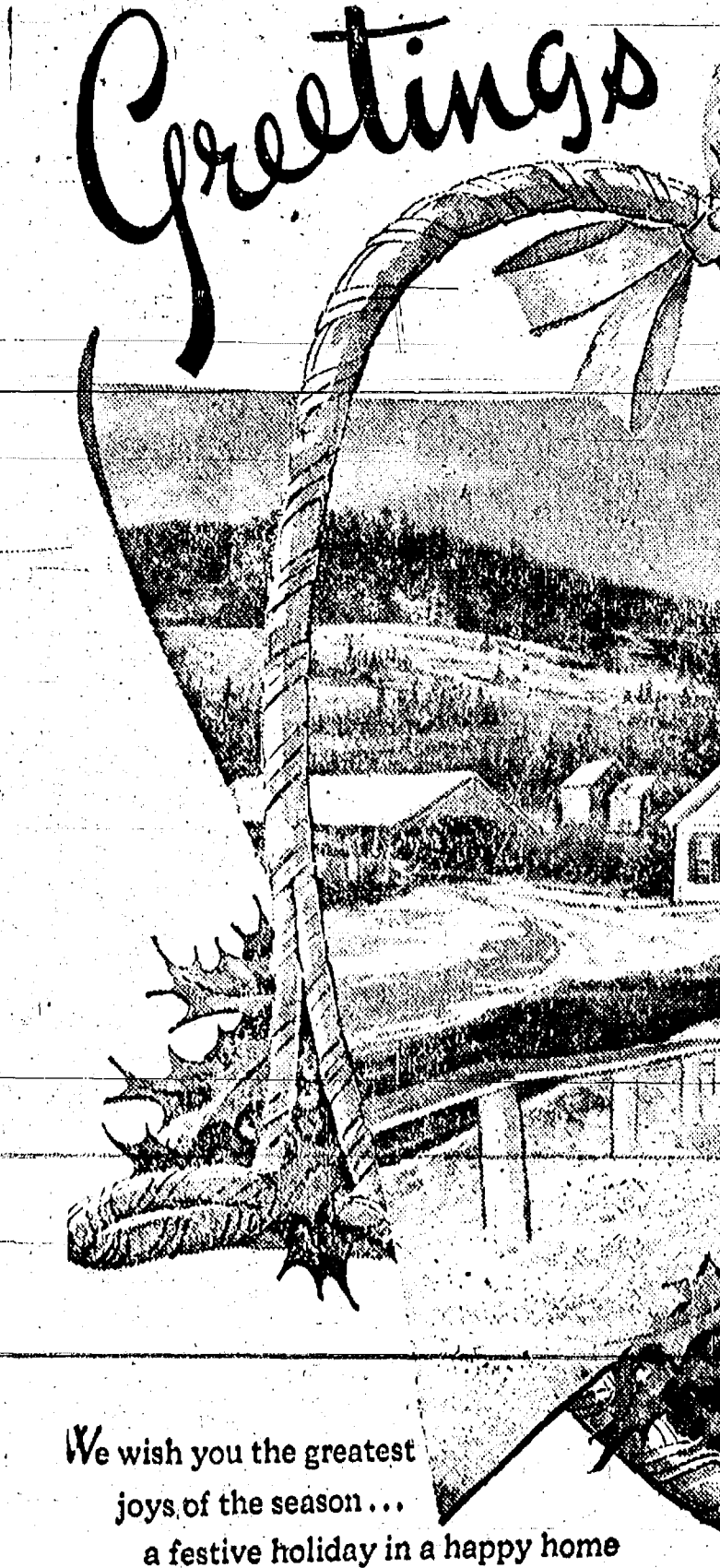
## Merry Christmas!



Now is the season of deep delight as dear ones gather to celebrate the Christmas Holiday. May yours be a merry one!

## Meabon's TV, Furniture &amp; Appliance

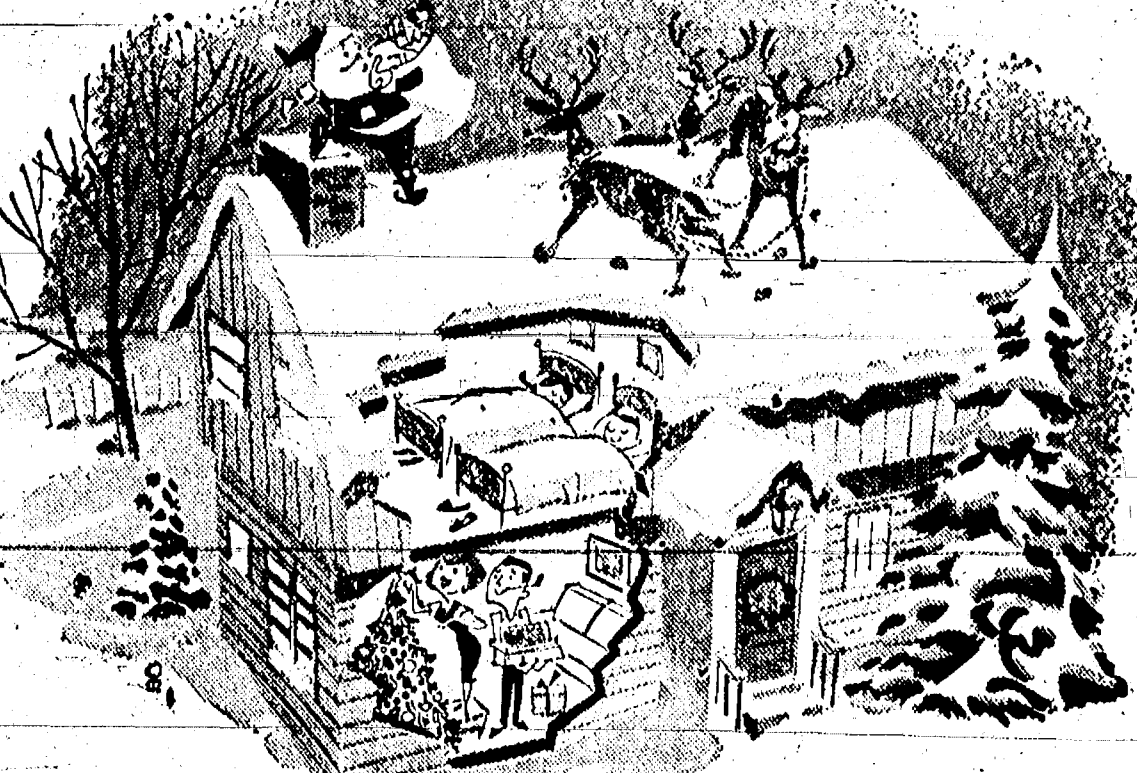
LEON and ESTHER



We wish you the greatest joys of the season... a festive holiday in a happy home where family and friends gather to exchange gifts and greetings, to light the fire, trim the tree, bask in the warmth of real affection. We will close at 6 p.m. Christmas Eve and be closed all Christmas Day.

## Dettling's Marathon Service

South Main Street and Old US-12 Phone 479-1561



**MERRY CHRISTMAS**  
Here comes Santa Claus with a pack full of cordial wishes for a Christmas that brings the best of everything to you  
**SINCLAIR REFINING CO.**  
Dillman Wahl, Marketer Jerry Herrick, Driver

## Holly Holds Sway

The holly tree and its brightly berried branches hold an important place not only in holiday decorations but in the legends and lore of Christmas. An old belief in England and Germany was that there are "he" and "she" hollies — the "he" hollies with spined leaves, the "she" hollies smooth-leaved. The varieties brought into the house at Christmas supposedly showed who would head the household for the coming year — "he" or "she." A variation on this custom said that if the holly was brought into the house in fair weather, the wife would rule, but if the weather was bad, the husband would be master. Holly was credited with many magical and medical powers. It was believed to cure toothaches, banish rickets, and even foretell to girls the names of their future husbands.

A driveway at Christmas time is safety officials urge parents to place where the family car stops long enough to change drivers. With teenagers home for the holidays hurriedly catching up on social activities and other affairs, check activities of the younger drivers; make sure that they are handling the family car with the extra safety needed over the holiday days.

## Christmas Greetings



With grateful thanks to our friends for the pleasure and privilege of serving you.

## A. D. MAYER AGENCY

"Your Protection Is Our Business"

## A MESSAGE at Christmas

Great is the joy that Christmas brings to mankind. What a blessing is the spirit that moves us to open our hearts in brotherly love, rejoicing in the wonderful gifts of peace and good will.

This is the promise of the Christmas message that God gave us twenty centuries ago, a message that men have learned, slowly and painfully, to hear and heed. We know that the promise can and will come to complete fulfillment because we have seen the wonder of the Christmas spirit when we have let it into our hearts, not only during the Christmas season but at any time of the year. We know that the fulfillment lies within us.

May the spirit of Christmas dwell with us in the year ahead so that the better world for which we yearn may come into manifestation.

May the joy of Christmas be yours in abundance.

M. J. Anderson, Pres.

## ANDERSON'S

Chelsea and Saline





Just  
Phone  
GR 5-3581

# BUY SELL TRADE RENT HIRE HELP

read the Want Ads

Ads  
Taken  
Til 5 p.m.  
Tuesday

## WANT ADS

## The Chelsea Standard

## WANT AD RATES

PAID IN ADVANCE—All regular advertisements, 50 cents for 25 words or less, each insertion. Count each figure as a word. For more than 25 words add 2 cents per word for each insertion. "Blind" ads or box number ads, 80c extra per insertion.

CHARGE RATES—Same as cash in advance, with 10 cents bookkeeping charge if not paid before 5 p.m. Friday preceding publication. Pay in advance, send cash or stamps and save 10 cents.

CARDS OF THANKS or MEMORIALS—Single paragraph style, \$1.00 per insertion for 50 words or less; 2 cents per word beyond 50 words. Minimum, 1 inch.

DISPLAY WANT ADS—Rate, \$1.10 per column inch single column width only. Second and third light type only. No borders or boldface type.

COPY DEADLINE—3 p.m. Tuesday, week of publication.

LOST—Two beagles Sunday, Dec. 15, in Waterford area. \$25 reward for return. Call Detroit TO 7-0866. 26

BASKETBALL BACKBOARDS—Regulation shape and size, prime-painted, \$6.75. Dial GR 5-3391, Chelsea Lbr. Co. 26

## BULLDOZING

## DICK KISS

6945 Werkner Rd., Chelsea, Mich. Phone 478-2446.  
If no answer call 479-2791 24tf

SKATES FOR SALE—Size 3-Canadian Flyer, like new; \$5. W. Soper, McKinley Rd., about 1/4 mile north of school. 27

## For the Best in POLE BUILDINGS

Call or Write  
JOHN LIVERMORE  
Gregory, Alpine 6-2827 36tf

PING PONG TABLE TOPS—Regulation 5 ft. by 9 ft. size, or 2 piece 4 1/2 ft. by 9 ft. Either, \$13.95. GR 5-3391, Chelsea Lumber Co. 26

TO GIVE AWAY—puppies (fox terrier-boxer) GR 5-4483. 26

FOR SALE—Maytag electric clothes dryer. Good condition. Call 475-5820. 26

TRAIN OR RACER BOARD—4 ft. x 8 ft. sheet, green finish, quieter than plywood. \$4.00 GR 5-3391, Chelsea Lumber Co. 26

## NAPOLEON LIVESTOCK COMMISSION CO.

Phone KE 6-4203.  
Auction every Monday, 2 p.m. We have buyers for all kinds of livestock. Order of sale: feeder pigs, dairy cattle, feeder cattle, sheep, calves, butcher cattle, butcher hogs.

## COMPLETE MARKETING SERVICE

For trucking to our sale call us or your local trucker. Livestock is insured from the time it is loaded at your farm until it leaves our barn. 34tf

## WANT ADS

FOR RENT—Second-floor apartment, unfurnished. Stove, refrigerator and heat furnished. Suitable for two. Call GR 5-5441 after 5. 20tf

FOR SALE—Three purebred Chester White boars ready for service. Call Robert Kushnau, GR 5-8186. 26

## MUM PLANTS

Hundreds to choose from \$3.00 and up  
Chelsea Greenhouse  
7010 Lingane Rd.  
Phone 479-6071 11tf

FOR RENT—3-room apartment with private entrance and bath. Refrigerator, stove, and heat furnished. Phone GR 5-4851 after 5 p.m. 26

## CLIFF'S WELDING SERVICE

524 1/2 North Main St.  
(Behind Production Machining)  
Also, complete portable equipment. Welding, cutting, brazing, pipe thawing.  
Phone 475-8731 or GR 5-8252 9tf

FOR RENT—Partly furn. apt. upstairs. For Sale: best by halves. 4710 Werkner Rd. GR 5-8339. 26

## G. G. HOPPER

Painting & Decorating - Building Contractors  
Phone GR 5-5581  
Gregory 498-2148 7tf

WANTED TO BUY—Hay of all grades. Contact our representative at the Sylvan Hotel, Chelsea, or write us direct—Art Callari Hay Co., Upper Sandusky, Ohio. 14tf

## FOR SALE

REAL ESTATE OUT OF TOWN—7 miles out 1 1/2 acres with new 3 bedroom home. 26

5 miles out, 20 acres with 2 bedroom modern home with garage and patio. 26

## IN TOWN

Small 2 bedroom home, full basement.  
On large lot, 4 bedroom home, new gas furnace, 3 car building.  
3 bedrooms, all modern landscaped yard. Close in.  
4 bedroom home, fenced in yard, new 2 1/2 car garage, glassed porch. See this one.  
Ranch type home on 2 lots, 3 bedrooms, garage attached.

## See or Call

Kern Real Estate  
616 South Main St.  
Chelsea, Mich. 21tf

## WANT ADS

NICELY FURNISHED APT.—Shower and built-in tub. Electric range. \$12.50 per wk. Lowe, 857 Cavanaugh Lake. 26

FOR SALE—3-piece child's ready-to-finish table and chair sets. Reg. \$6.95, dial GR 5-3391, Chelsea Lumber Co. 26

## HOOTENANNY USED CAR SALE

The Finest - Cleanest Cars in town  
DEMONSTRATORS  
(New Car 2-year Guarantee)  
1963 Galaxie 500 XL Hardtop  
1963 Thunderbolt Hardtop

## SPECIAL

1959 Chevrolet 4-Door Sedan V-8, Power Glide, good tires, no rust. Very clean over-all. Was \$895.

This Week Only \$595

'62 Falcon Station Wagon (2 to choose from)  
'61 Ford Fairlane 500 4-Door  
'60 Ford 2-Door (2 to choose from)  
'59 Chev 4-Dr Wagon  
'58 Ford 4-Dr Wagon  
'58 Ford 4-Door  
'58 Mercury 4-Door  
'57 Ford 2-Door (like new)  
'57 Pontiac 4-Door  
'55 Ford 2-Door (very clean)

'57 Chev Panel (runs real good)

## TRANSPORTATION

'55 Pontiac 2-door \$95  
'50 Plymouth \$50

## 2 BIG LOTS

Corner of Orchard and S. Main and 222 S. Main St.  
Easy Financing Arranged  
25 months Guarantee  
GR 5-8281

Palmer Motor Sales  
Over 60 Years of Friendly Dealing

ANYONE FOUND LOOTING or trespassing on the property at 13875 Island Park Rd. at West Lake, will be prosecuted. Signed: Ed Vogel, owner.

FOR RENT—Two trailer spaces available now. 40 feet or less. Contact manager, Chelsea Trailer Park. GR 5-4121. 27

## CLOGGED SEWER

Reynolds Sewer Service  
We Clean Sewers Without Digging  
Drains Cleaned Electrically  
FREE ESTIMATES  
2-YEAR GUARANTEE  
Phone Ann Arbor NO 2-5277  
'Sewer Cleaning Is Our Business—Not a Side Line' 38tf

WANTED—Remodeling jobs. Especially experienced in difficult, older-type rooms. Reasonable hourly rate. Call HA 6-2416. 44tf

FOR TRACTORS and equipment. Also New Holland machinery. Sales and service—Cobb & Schreier, Stockbridge. Phone ULYsses 1-4525. 49tf

## Septic Tanks And Drain Fields

INSTALLED TO COUNTY CODE SPECIFICATIONS  
Septic tanks from 300 gal. to 2,000 gal. available for prompt installation.

HILLTOP PLUMBING  
BOB SHEARS  
201 S. Main Phone 479-3851 2tf

MOVING TO CITY—Registered guernsey family cow; a stallion, real nice burro; almost new 2-gal. Sears milk pasteurizer; feeder pigs and sheep. 479-7943. 23tf

## ALLSTATE INSURANCE

HOME - PERSONAL - COMMERCIAL - AUTO - BOAT  
N. H. MILES, Agent  
Phone GR 5-8834  
Call evenings or week-ends 14tf

If it's a job for Bottled Gas IT'S A JOB FOR SHELLANE

Product of the Shell Oil Company

HILLTOP PLUMBING  
BOB SHEARS  
201 S. Main St. Ph. 479-3851



"Lucky you got insurance in the Standard Want Ads - someone is driving your car away!"

## WANT ADS

SNOW TIRES—Firestone recaps, priced from \$12.00. One-year road hazard warranty and lifetime on material and workmanship. Palmer Motor Sales, Inc. 222 South Main St. Phone GR 5-3271. 23tf

LONG-PLAY PHONO ALBUMS  
Christmas Orchestras  
Country Vocals and Others

GIFT CERTIFICATES  
FRIGID PRODUCTS  
113 North Main St.  
Phone GR 9-6551 27

ALCOHOLICS ANONYMOUS  
Call 475-5231 or write Box 44.  
27

ALTERATIONS AND SEWING  
Ruth Mahar, 742 Book. Ph. 479-3481. 26

FARM LOANS!  
Buy land, livestock, refinance. Free Appraisals - Fast Service  
5 1/2% interest

Federal Land Bank  
ROBERT HALL, MGR.  
2221 Jackson Ave.  
Telephone NOrmandy 5-6139  
Ann Arbor, Mich. 27tf

ROOM FOR RENT—Gentleman preferred. Breakfast and lunch served if desired. GR 9-6768. 20tf

FISH SHANTY—Plans and Materials, complete no floor, \$19.95. 6 ft. x 4 ft. GR 5-3391, Chelsea Lumber Co. 26

FOR SALE—Apples—McIntosh, Jonathan, Cortland and Delicious. Clarence Lehman, GR 9-3596. 26

FOR SALE  
New 3-bedroom and den brick Cape Cod near Half Moon Lake on Hankard (county road). Two baths, double fireplace, garage, built-in Chelsea school district. Open daily. Scenic Noah Heights Subdivision.

BUILDER  
E. A. WIGLE  
Phone 479-4471 14tf

Grave Blankets  
Wreaths - Roping  
Outdoor Christmas Decorations, including carolers, santas, sleighs and reindeer.  
Fresh Cut Flowers, Potted Plants, all kinds  
Christmas Arrangements - artificial or Real Flowers  
We Wire Flowers Anywhere  
Also Do Funeral Work  
To Please You

Sylvan Flower Shop  
716 West Middle St.  
Chelsea, Mich.  
GR 5-4561 Local Delivery 26

FOR SALE  
New 3-bedroom and den brick Cape Cod near Half Moon Lake on Hankard (county road). Two baths, double fireplace, garage, built-in Chelsea school district. Open daily. Scenic Noah Heights Subdivision.

BUILDER  
E. A. WIGLE  
Phone 479-4471 14tf

Grave Blankets  
Wreaths - Roping  
Outdoor Christmas Decorations, including carolers, santas, sleighs and reindeer.  
Fresh Cut Flowers, Potted Plants, all kinds  
Christmas Arrangements - artificial or Real Flowers  
We Wire Flowers Anywhere  
Also Do Funeral Work  
To Please You

Sylvan Flower Shop  
716 West Middle St.  
Chelsea, Mich.  
GR 5-4561 Local Delivery 26

FOR SALE  
New 3-bedroom and den brick Cape Cod near Half Moon Lake on Hankard (county road). Two baths, double fireplace, garage, built-in Chelsea school district. Open daily. Scenic Noah Heights Subdivision.

BUILDER  
E. A. WIGLE  
Phone 479-4471 14tf

Grave Blankets  
Wreaths - Roping  
Outdoor Christmas Decorations, including carolers, santas, sleighs and reindeer.  
Fresh Cut Flowers, Potted Plants, all kinds  
Christmas Arrangements - artificial or Real Flowers  
We Wire Flowers Anywhere  
Also Do Funeral Work  
To Please You

Sylvan Flower Shop  
716 West Middle St.  
Chelsea, Mich.  
GR 5-4561 Local Delivery 26

FOR SALE  
New 3-bedroom and den brick Cape Cod near Half Moon Lake on Hankard (county road). Two baths, double fireplace, garage, built-in Chelsea school district. Open daily. Scenic Noah Heights Subdivision.

BUILDER  
E. A. WIGLE  
Phone 479-4471 14tf

Grave Blankets  
Wreaths - Roping  
Outdoor Christmas Decorations, including carolers, santas, sleighs and reindeer.  
Fresh Cut Flowers, Potted Plants, all kinds  
Christmas Arrangements - artificial or Real Flowers  
We Wire Flowers Anywhere  
Also Do Funeral Work  
To Please You

Sylvan Flower Shop  
716 West Middle St.  
Chelsea, Mich.  
GR 5-4561 Local Delivery 26

FOR SALE  
New 3-bedroom and den brick Cape Cod near Half Moon Lake on Hankard (county road). Two baths, double fireplace, garage, built-in Chelsea school district. Open daily. Scenic Noah Heights Subdivision.

BUILDER  
E. A. WIGLE  
Phone 479-4471 14tf

Grave Blankets  
Wreaths - Roping  
Outdoor Christmas Decorations, including carolers, santas, sleighs and reindeer.  
Fresh Cut Flowers, Potted Plants, all kinds  
Christmas Arrangements - artificial or Real Flowers  
We Wire Flowers Anywhere  
Also Do Funeral Work  
To Please You

## WANT ADS

PAINTING—Interior or exterior, brush or spray; also paperhanging. All work guaranteed. Insured. Ray Schultz, 475-5231. 47tf

COINS—U.S. and foreign, reasonable prices. Lawrence E. Guinan, coin collector, 1571 Sugar Loaf Lake, Chelsea. 27

FOR SALE—1964 Ford Sunliner, Fordomatic and radio, good transportation, \$76; also, 14-foot Layton trailer complete with brakes and hitch, in A-1 condition. 137 Owens Court. Phone GR 5-8260. 26

## CHRISTMAS SERVICE SPECIAL

Reg. \$8.50  
Wheel Alignment  
\$6.00

Good only until Jan. 1st, 1964 and by appointment only.  
CALL NOW, GR 5-5311

Harper  
Sales & Service, Inc.  
118 West Middle St.  
Chelsea, Michigan 26

CARD OF THANKS  
The thoughtfulness and sympathy of neighbors and friends in our recent sorrow will always remain with us as a precious memory. Our sincere thanks and gratitude for the many comforting expressions of sympathy and acts of kindness. Special thanks to the Rev. John Jolley and the Burghardt Funeral Home.  
Family of Max Lee Hoppe.

CARD OF THANKS  
Our heartfelt thanks to all who expressed sympathy in so many thoughtful ways during our recent bereavement. The kindness and thoughtfulness extended at this time is most deeply appreciated. Special thanks to the Rev. Paul Schnake; also, to Daniels Motor Sales and Frigid Products.  
Family of Emory Conk.

Who Knows Answers...  
1. George III.  
2. The surrender of Lord Cornwallis to Americans at Yorktown, in the Revolutionary War.  
3. Martin Van Buren, born Dec. 5, 1782; Woodrow Wilson, born Dec. 28, 1856; and Andrew Johnson, born Dec. 20, 1808.  
4. Roy Kohler  
5. William Howard Taft.  
6. Fifty-five.  
7. Yes, but it was ceded back to the state of Virginia.  
8. Dec. 23.  
9. Psalm 88:12.  
10. Sixty-nine.

BUSINESS AND ECONOMY  
President Johnson's Federal budget will be pared to "the lowest possible level" but conceded the spending blueprint he sends Congress next month may reach a record \$100,000,000,000 or more.

Kennedy had sliced the budget from requests submitted by Federal Agencies, Pierre Salinger, White House press secretary said, and "President Johnson is attempting to cut that budget further."

GIS LEAVE GERMANY  
The United States has brought home about 31,000 soldiers who were sent to strengthen the Army in West Germany during the Berlin crisis two years ago, it has been reported.

The remaining 10,000 reinforcement probably will stay with the United States 7th Army for some time. This places the 7th Army's current strength at about 242,000 men.

Most propositions in which you stand to make a killing have a flaw somewhere.

To worship in the church of your choice... to hear the Christmas story... to sing Christmas carols... to greet your friends and neighbors... to share the joys of the season with your loved ones... that's Christmas, and may you and yours enjoy it to the fullest!

Waterloo Garage  
Glenn Rentschler

FOR SALE  
New 3-bedroom and den brick Cape Cod near Half Moon Lake on Hankard (county road). Two baths, double fireplace, garage, built-in Chelsea school district. Open daily. Scenic Noah Heights Subdivision.

BUILDER  
E. A. WIGLE  
Phone 479-4471 14tf

Grave Blankets  
Wreaths - Roping  
Outdoor Christmas Decorations, including carolers, santas, sleighs and reindeer.  
Fresh Cut Flowers, Potted Plants, all kinds  
Christmas Arrangements - artificial or Real Flowers  
We Wire Flowers Anywhere  
Also Do Funeral Work  
To Please You

Sylvan Flower Shop  
716 West Middle St.  
Chelsea, Mich.  
GR 5-4561 Local Delivery 26

FOR SALE  
New 3-bedroom and den brick Cape Cod near Half Moon Lake on Hankard (county road). Two baths, double fireplace, garage, built-in Chelsea school district. Open daily. Scenic Noah Heights Subdivision.

BUILDER  
E. A. WIGLE  
Phone 479-4471 14tf

Grave Blankets  
Wreaths - Roping  
Outdoor Christmas Decorations, including carolers, santas, sleighs and reindeer.  
Fresh Cut Flowers, Potted Plants, all kinds  
Christmas Arrangements - artificial or Real Flowers  
We Wire Flowers Anywhere  
Also Do Funeral Work  
To Please You

Sylvan Flower Shop  
716 West Middle St.  
Chelsea, Mich.  
GR 5-4561 Local Delivery 26

FOR SALE  
New 3-bedroom and den brick Cape Cod near Half Moon Lake on Hankard (county road). Two baths, double fireplace, garage, built-in Chelsea school district. Open daily. Scenic Noah Heights Subdivision.

BUILDER  
E. A. WIGLE  
Phone 479-4471 14tf

Grave Blankets  
Wreaths - Roping  
Outdoor Christmas Decorations, including carolers, santas, sleighs and reindeer.  
Fresh Cut Flowers, Potted Plants, all kinds  
Christmas Arrangements - artificial or Real Flowers  
We Wire Flowers Anywhere  
Also Do Funeral Work  
To Please You

Sylvan Flower Shop  
716 West Middle St.  
Chelsea, Mich.  
GR 5-4561 Local Delivery 26

FOR SALE  
New 3-bedroom and den brick Cape Cod near Half Moon Lake on Hankard (county road). Two baths, double fireplace, garage, built-in Chelsea school district. Open daily. Scenic Noah Heights Subdivision.

BUILDER  
E. A. WIGLE  
Phone 479-4471 14tf

Grave Blankets  
Wreaths - Roping  
Outdoor Christmas Decorations, including carolers, santas, sleighs and reindeer.  
Fresh Cut Flowers, Potted Plants, all kinds  
Christmas Arrangements - artificial or Real Flowers  
We Wire Flowers Anywhere  
Also Do Funeral Work  
To Please You

Sylvan Flower Shop  
716 West Middle St.  
Chelsea, Mich.  
GR 5-4561 Local Delivery 26

FOR SALE  
New 3-bedroom and den brick Cape Cod near Half Moon Lake on Hankard (county road). Two baths, double fireplace, garage, built-in Chelsea school district. Open daily. Scenic Noah Heights Subdivision.

BUILDER  
E. A. WIGLE  
Phone 479-4471 14tf

Grave Blankets  
Wreaths - Roping  
Outdoor Christmas Decorations, including carolers, santas, sleighs and reindeer.  
Fresh Cut Flowers, Potted Plants, all kinds  
Christmas Arrangements - artificial or Real Flowers  
We Wire Flowers Anywhere  
Also Do Funeral Work  
To Please You

Sylvan Flower Shop  
716 West Middle St.  
Chelsea, Mich.  
GR 5-4561 Local Delivery 26

FOR SALE  
New 3-bedroom and den brick Cape Cod near Half Moon Lake on Hankard (county road). Two baths, double fireplace, garage, built-in Chelsea school district. Open daily. Scenic Noah Heights Subdivision.

## Red, Green Set Yule Scene With Symbolic Meanings

The traditional colors of the Christmas season are red and green. Yet these colors have meant different things to different people over the ages. Color has been used as the symbol of abstract ideas from time immemorial.

In early and medieval Christian art colors had a mystic or symbolic meaning. Red indicated passion. In its good sense it was a symbol of divine energy and love and the creative power of the Holy Spirit; in its bad sense it was a sign of hate. In that meaning it became an emblem of Satan.

Emerald Green is often the symbol of hope and growth in many Christian paintings.

Colors played an important role in medieval magic and superstition. For example, the famous "philosopher's stone," which the alchemists thought would turn base metals into gold and cure all diseases, was thought to be colored red, according to the Encyclopedia Americana. Red was also a favorite curative color in more recent superstitions.

In Indonesia, the people think a piece of bright red coral will keep its owner's teeth in good order, and there are people everywhere who are sure that a person owning a ruby will live to a ripe old age.

Green was a sacred color among the ancient and medieval Egyptians who gave it the symbol of life and the joy of living. The Moslems carried this symbolism throughout the Middle East, and the faithful, on returning from the pilgrimage to Mecca, wear a green turban.

Who Knows Answers...  
1. George III.  
2. The surrender of Lord Cornwallis to Americans at Yorktown, in the Revolutionary War.  
3. Martin Van Buren, born Dec. 5, 1782; Woodrow Wilson, born Dec. 28, 1856; and Andrew Johnson, born Dec. 20, 1808.  
4. Roy Kohler  
5. William Howard Taft.  
6. Fifty-five.  
7. Yes, but it was ceded back to the state of Virginia.  
8. Dec. 23.  
9. Psalm 88:12.  
10. Sixty-nine.

Familiar tune department: "Just send it over and I'll mail you a check next month."

Stiver's

Merry Christmas

To Mother, Dad, and "young 'uns," too... Grandma, Grandpa, all of you... we send our warmest wishes, true... for Christmas joys to please the "crow."

Schneider's Grocery  
Carl Schneider - Howard Flintoft

Merry Christmas to All

Join the Crowd at the

New Year's Eve Party  
Dec. 31, 1963 - 9 to 4  
at the

ANCHOR INN  
11980 MCGREGOR ROAD

BILL KLAVE TRIO  
\$3.00 PER COUPLE - FAVORS  
For Reservations call HA 6-8183 or HA 6-4160



## GREETINGS

As Christmas comes to you this year, we warmly wish that it may bring a holy meaning ever deeper, hopes ever brighter, and joyous blessings ever richer.

Staffan Funeral Home  
"Funeral Directors for Four Generations"

If it's a job for Bottled Gas IT'S A JOB FOR SHELLANE

Product of the Shell Oil Company

HILLTOP PLUMBING  
BOB SHEARS  
201 S. Main St. Ph. 479-3851

Grave Blankets  
Wreaths - Roping  
Outdoor Christmas Decorations, including carolers, santas, sleighs and reindeer.  
Fresh Cut Flowers, Potted Plants, all kinds  
Christmas Arrangements - artificial or Real Flowers  
We Wire Flowers Anywhere  
Also Do Funeral Work  
To Please You

Sylvan Flower Shop  
716 West Middle St.  
Chelsea, Mich.  
GR 5-4561 Local Delivery 26



## erman-Born Lithographer Credited as 'Father' of Greeting Cards

To Louis Prang, a native of Eschau, Germany, goes the credit of being "father" of the American Christmas card.

Prang, a lithographer who became a greeting card business in Eschau, exhibited his own designs at the Centennial Exposition in Philadelphia in 1876. He had the idea of holding an annual competition to obtain the best of American art for cards. Hundreds of paintings were entered in Prang's contest, for prizes ranging from \$200 to \$1,000. Winners, with exceptions, were artists born in the United States. Women artists were well-represented among winners. Rosina Emmet was the mother of the late author and playwright, Robert Emmet Sherwood. Others were Dora Wheeler, Anne Morse, Elizabeth Humphrey and Florence Tabor.

The group of 20 Prang prize cards is owned by Norcross, Inc., greeting card publishers.

### ACCIDENTS COSTLY

The average cost of an accident is \$100 for each vehicle involved. Statistics prove that safe highways reduce your chances of an accident by one-half. Support the cause of safe roads in Michigan.

## Candles Cast Festive Glow On Traditional Yule Scene

Candles have cast a glow over Christmas festivities for centuries.

One of the very earliest of legends tells of the Christ Child wandering the streets of the world in search of shelter on Christmas Eve. Lighted candles are placed in windows to welcome Him.

From Germany comes a similar belief that the Virgin Mary and a host of angels pass over the countryside each Christmas Eve. Candles are put in the windows of German homes as an invitation

and guide to the food that is traditionally left for them.

Many of the Christmas traditions that have sprung up around the use of candles had their origin in pagan rites.

The pagan Yule, nearly coinciding with today's date for Christmas, was accompanied by the burning of a giant log during the twelve days in which it was thought that the sun stood still. From this stems Yule log tradition.

In medieval Europe the custom arose of also lighting a giant Christmas candle that would burn brightly all Twelfth Night.

Dying their Saturnalia Roman fastened candles to trees to dispel the darkness, thus indicating the sun's return.

There is an old story that Martin Luther brought a fir tree into the nursery on Christmas Eve for his wife and children. To show them the glory of the night when Christ was born, he decorated the tree with lighted candles, representing stars.

Today, electric lights have taken the place of candles on Christmas trees, but candles still burn brightly in churches and homes throughout the world.

One of the most impressive holiday uses of candles is in the services held in many churches at Christmas time.

Appropriately enough, one of the loveliest of candlelight ceremonies takes place each year in the Central Moravian church at Bethlehem, Pa. Complete with traditional organ and orchestral music, the program includes reading of the Christmas story, prayers and carols.

### Warding Off Witches Led to Candy Canes

One of the most popular symbols of the Christmas holidays, candy canes, began with an old superstition during the Middle Ages. Europeans of that period carried glass canes filled with colored candles to distract evil witches.

Belief was that the evil ones become so interested in sorting the candles that casting of evil spells was forgotten, reports the Candy, Chocolate and Confectionery Institute.

### Sports Quiz Answers...

1. Auburn, 10-8.
2. Yale, 20-0.
3. Light heavyweight - boxing champion.
4. Roger Staubach.
5. Illinois (7-1-1) versus Washington (6-4).

A Standard Classified Will Sell It!



(This is a public service article explaining in general terms a provision of Michigan law.)

To date the greatest number of legal questions concerning the new Michigan Constitution seem to center around the election of various public officials.

As the chief legal officer of the state, the Attorney General is charged with interpreting the Constitution and the numerous laws in this State.

County officers, which includes your county clerk, county prosecutor, etc., will be up for election for a four-year term at the November, 1964 election. This office issued a formal legal opinion that the legislature may not extend the term of these incumbent officers for an additional two-year period and delay holding the election until 1966.

The present term of circuit judges will expire Dec. 31, 1964. Under the 1908 Constitution their election was due in April of 1965. Because the biennial Spring election has been abolished by the revised Constitution, it will be held instead in November, 1966.

Other public officials who will feel the effect of the new Constitution will be the justices of the peace and circuit court commissioners.

The justices of the peace and circuit court commissioners are to be automatically terminated within five years. The legislature is authorized to abolish the positions earlier. The new Constitution states that no judicial officer shall be compensated by fees except that the legislature may permit them to retain their fee system during the period remaining before the abolition of their offices.



Greetings AND BEST WISHES FOR THE Christmas Season

Chelsea Post Office Staff

### SKIERS AIDS

Michigan ski resorts boast a total of 20 chair lifts, 42 T-Bar and J-bar lifts, 19 pomalifts and more than 350 rope tows, according to the Michigan Tourist Council.

### TRIPLE LIFT

The world's first triple-chair lift, located at a western Michigan ski resort, is just one of 81 lifts serving Michigan winter sports centers. Information concerning all Michigan winter sports centers may be obtained by contacting the Michigan Tourist Council, Lansing.

## Christmas FLOWERS



### ALL KINDS...

- ★ Wreaths - Greens for Trimming
- ★ Fresh - Cut Flowers
- ★ Table Arrangements

## SYLVAN FLOWER SHOP

716 W. Middle St., Chelsea Phone GR 5-4561

— LOCAL DELIVERY —

We Wire Flowers Everywhere



## O, Holy Night

May the blessings of the night when Christ was born enkindle in your heart a happiness that shines ever brighter throughout all the days to come.

## Burghardt Funeral Home

## — SPECIALS —

- ICE BOX JAR Stuffed Olives . . . . 35c
- MICHIGAN Sour Cream . . . pt. 39c
- NORTHERN Tissue . . . . 4 rolls 31c
- NO. 303 CAN-DEL MONTE Fruit Cocktail . 2 for 47c

We Wish Everyone A MERRY CHRISTMAS

## KUSTERER'S

FOOD MARKET

DIAL GR 9-3331

WE DELIVER



## BLESSINGS at Christmastime

"And when they were come into the house, they saw the young Child with Mary His mother, and fell down, and worshipped Him; and when they had opened their treasures, they presented unto Him, gifts, gold and frankincense, and myrrh." May the sacred story of Christmas and its wondrous message bless you with spiritual joys and quiet contentment...

## MERKEL BROTHERS

FERD - NORB - LEON - GERT - HELEN - BOB - JACK - LEOLA - FLORENCE - DAVID



## GREETINGS

At Christmastime, we raise our voices to wish you all every happiness, and express our sincere gratitude for your kind patronage and good will.



## KLUMPP BROS. GRAVEL







# Spirit of Christmas Rules in Joyous Community Celebrations

It's Christmas time! Everywhere, glad sights and sounds reflect the spirit of the season, as the community celebrates the joyous holiday.

The spirit of Christmas is seen, gaily decorated streets and homes aglow with light and festive with evergreens, in places where the manger scene is anew the wonderful old story of a holy Babe who was born in Bethlehem nearly 2,000 years ago. The spirit of Christmas is heard, bells ringing out from street to street, in happy voices singing all the songs of the season, from old familiar carols to

the more solemn, but at the same time joyful, anthems, cantatas and oratorios.

The spirit of Christmas is felt, as last minute preparations for the big celebration are made. There are always, it seems, some final trimmings to be put on the tree, some part of the Christmas pageant or choral program that needs just one more rehearsal, some extra touches to make the Christmas feast absolutely perfect. In the midst of the hustle and bustle, the spirit of Christmas shines through in all its many meanings.

The spirit of Christmas means

laughter and joy—best expressed, perhaps by the faces of children, eager and smiling as they wait for Santa, full of reverent wonder as they hear the Christmas story and see the manger scene.

The spirit of Christmas means giving, with love wrapped into every package. And it means sharing—the riches of thoughtful consideration and genuine interest, as well as time and money—with the aged, the ill, the needy and unfortunate.

The spirit of Christmas means a warm renewal of family ties and close friendships and an enjoyment of traditions treasured

through the years—the special customs each family creates for itself, as well as the traditions garnered from the lore and legends of Christmas.

**Naming the Day**  
As a holy day and a holiday, Christmas means both prayerful worship and festive merrymaking. The holy meaning of the day is expressed in its name.

The Latin name for Christmas translates as the Feast or Birthday of Our Lord. The English Christmas means the Mass of Christ, a meaning which is closely

paralleled by the Dutch "Kerstmis." In German it's "Weihnacht," or "sacred night."

The French "Noël" has several possible meanings—news, birthday or a "shout of joy." Whatever the exact origin, there's no

**PERPETUAL ICE**  
Ice and snow can be found throughout the year under the sands of the Sleeping Bear Dunes, according to the Michigan Tourist Council. The dunes are located in Leelanau county in Western Michigan, an area popular year-round with vacationers and tourists.

question that Noel now means Christmas.

**How the Tree Grew**  
When the German prince Alfred married Queen Victoria, he carried the custom of the Yule tree to England, and from there it spread by imitation and immigration to the United States and Canada.

The German origin is appropriate, since it was in Germany that the English missionary St. Boniface, formerly a monk named Wynfrid, first instituted the decorated fir tree, a tribute to the Christ

Child, as a replacement for the sacrifices made to the oak, which was sacred to the pagan god Odin.

**When Caroling Began**  
With the joyful strains of "Silent Night," "The First Noel" and other beloved carols, today's carolers carry on a meaningful Christmas custom that originated centuries ago.

As early as the fourth century A.D., a musical poem was sung in honor of St. Basil and his victory in the fight for Christianity over the Byzantine emperor Julian. In Greece, legends of St. Basil

were later put to music and sung at Christmas and the New Year.

The first real Christmas carols, however, were probably sung in the Italian mountain village of Greccio when St. Francis of Assisi created the first manger scene in 1223. He and his brethren led the villagers in singing hymns of praise to the Christ Child.

**IN GERMANY**  
For German children the Christmas season begins with the hanging of a calendar showing a painted house, on Dec. 1. Doors and windows of the house often hide pieces of candy.

## STOP & SHOP

14901 Old U.S. 12-Corner M92-Chelsea, Mich.

**STORE HOURS**  
THURSDAY, DECEMBER 26, THRU SATURDAY, JANUARY 4  
9 A.M. TO 9 P.M.  
TUESDAY, DECEMBER 31, NEW YEAR'S EVE, 8 A.M. TO 6 P.M.  
CLOSED WEDNESDAY, NEW YEAR'S DAY  
PRICES EFFECTIVE  
THURSDAY, DECEMBER 26, THRU TUESDAY, JANUARY 7, 1964

We Reserve The Right To Limit Quantities

STOP & SHOP Features... "Triple R Farms"... U. S. Choice... Corn Fed Beef

"Triple R Farms" --- U. S. Choice

## STEAK SALE

★ ROUND	79 <sup>c</sup> lb.
★ SIRLOIN	89 <sup>c</sup> lb.
★ CHUCK	69 <sup>c</sup> lb.
★ RIB	89 <sup>c</sup> lb.
★ CUBE	89 <sup>c</sup> lb.

"Triple R Farms" --- Mich. Grade 1

Sliced Bologna 39<sup>c</sup> lb.

SWIFT'S ORIOLE

Hickory Smoked

SLICED

BACON 1-lb. Layer 49<sup>c</sup>

"Triple R Farms" --- Mich. Grade 1

Skinless Wieners 39<sup>c</sup> lb.

Lean, Meaty, Tender

Pork Steak 49<sup>c</sup> lb.

"Triple R Farms" --- SEMI-BONELESS

HAMS

- Hickory Smoked
- Ready To Eat
- Shankless
- Skinless

Whole or Half

59<sup>c</sup> lb.

Lean, Tender --- BOSTON BUTT

Pork Roast 39<sup>c</sup> lb.

MORRELL'S --- Ready To Eat

CANNED HAMS

- Shankless
- Fully Cooked
- Boneless
- Skinless

5<sup>c</sup> Can

\$3.69

"Triple R Farms"

Fresh, Sliced

Beef Liver 35<sup>c</sup> lb.

KRAFT'S Salad Dressing

**Miracle Whip**

Quart Jar 39<sup>c</sup>

STOKELY'S

Tomato Juice 46 Oz. Can 25<sup>c</sup>

KRAFT'S PHILADELPHIA Cream Cheese 8 Oz. Pkg. 29<sup>c</sup>

MICHIGAN Brand --- Cultured

Sour Cream Pint Carton 39<sup>c</sup>

CHEF'S CHOICE --- Frozen

French Fries 2 Lb. Pkg. 29<sup>c</sup>

WILSON'S All Star --- Fresh Creamed

Cottage Cheese 1-lb. Ctn. 22

WILSON'S All Star

EGG NOG Quart Carton 59<sup>c</sup>

Chase & Sanborn, Hills Bros. or MAXWELL HOUSE

**COFFEE**

1-lb. Can 58<sup>c</sup>

Assorted Fruit Flavors

**JELL-O**

3 Oz. Pkg. 8<sup>c</sup>

Regular or 1 Calorie Ginger Ale

**VERNORS**

12 Oz. Can 10<sup>c</sup>

KRUN-CHEE --- Magic Pak

**POTATO CHIPS**

ONLY

1 1/2 Lb. Ctn. With Poly Liner 89<sup>c</sup>

**Fabulous FUDGE**

a Golden Spoon recipe

EVERY BATCH PERFECT WITH PET EVAPORATED MILK... Get recipe at our store YOU WILL NEED:

KRAFT MARSHMALLOW CREME 7 Oz. Jar 25<sup>c</sup>

NESTLE'S CHOCOLATE MORSELS 12 Oz. Pkg. 39<sup>c</sup>

PET EVAPORATED MILK 7 Tall Cans \$1.00

STOKELY'S

Fruit Cocktail 2 No. 303 Cans 39<sup>c</sup>

DOLE --- Hawaiian

Sliced Pineapple 3 No. 2 Cans \$1.00

RICH'S Whip Topping 10 Oz. Can 29<sup>c</sup>

Real Fruit Punch

Hawaiian Punch (Red or Yellow) 3 46 Oz. Cans \$1.00

MT. WHITNEY --- Colossal

Ripe Olives 8 1/2 Oz. Can 29<sup>c</sup>

NABISCO --- Vert-Thin

Pretzels 8 Oz. Box 27<sup>c</sup>

Chef BOY-AR-DEE

Complete Cheese Pizza 15 1/2 Oz. Pkg. 44<sup>c</sup>

HEKMAN'S

Club Crackers 1-lb. Box 37<sup>c</sup>

SUNSHINE

Hydrox Cookies 1-lb. Pkg. 45<sup>c</sup>

SHAMROCK Grade "A" Country-Fresh Medium Size

**EGGS**

All White Doz. In Ctn. 35<sup>c</sup>

CAMPBELL'S

**PORK & BEANS**

16 Oz. Can 12<sup>c</sup>

U.S. No. 1 --- All Purpose

**IDAHO POTATOES**

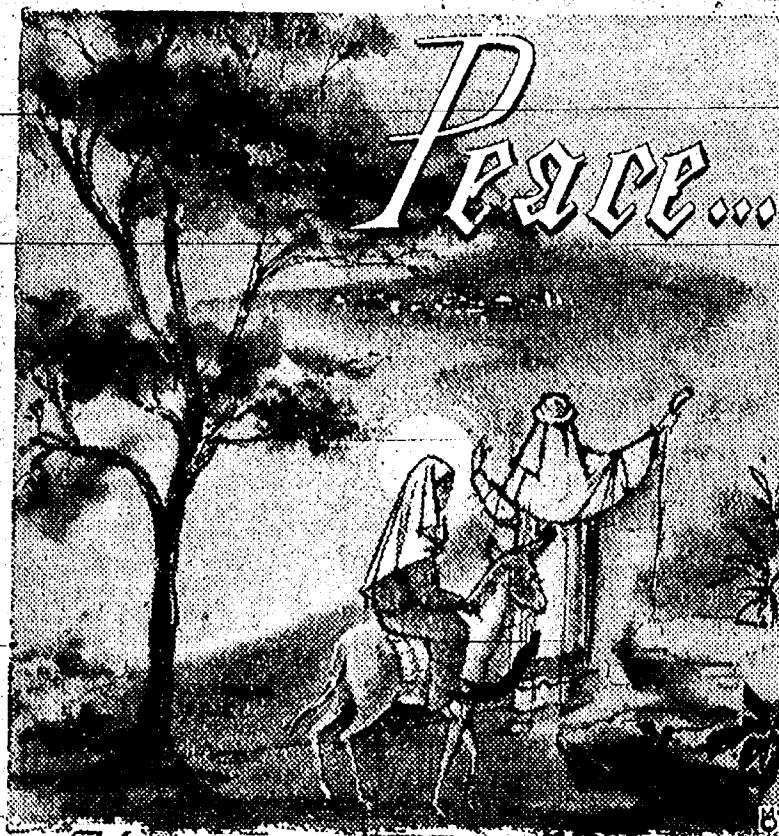
8 Lb. Mesh Bag 49<sup>c</sup>



It appears that even a cold war costs money, and plenty of it. An individual is only as intelligent as he is curious.



Cavanaugh Lake Store



May the Christmas spirit of Peace on Earth come to dwell in the hearts of all.

Norma's Beauty Shop



*Greetings*

Glowing as a cheery hearth, bright as a gaily-lighted tree are our warm-hearted wishes for your joy and contentment at this happy holiday season. We greatly enjoy our pleasant business relations with you and hope that they may long continue. To you, our most grateful thanks.

SLOCUM  
CONTRACTORS

## Holiday Season's 'Firsts' Are Traced Deep in History

Shepherds watched, angels sang and wise men traveled far to behold the miracle of the first Christmas.

Since that holy night a multitude of legends and customs, both religious and secular, have developed as part of the holiday. Each legend was once told, each custom once observed for the first time, and though origins of many traditions are now lost in time, other Christmas "firsts" have been recorded for posterity.

Three are historical Christmas "firsts," attested by church records and by scientific research into the early years of Christianity, as well as "firsts" of later history and "firsts" that blend fact with myth.

### Setting the Date . . .

Dec. 25 was first assigned as the date for the celebration of the Nativity in about the year 320 A.D. Since the New Testament was written as religious instruction rather than history, the exact date of Christ's birth is not known.

### Hanging Stockings . . .

Story of the first Christmas stocking is associated with the real St. Nicholas, a fourth century bishop known for his many kind deeds. Wishing to present an anonymous gift to help the daughters of an impoverished merchant, he threw a bag of gold down the chimney, where it fell into a stocking hung up to dry.

The legend is reflected in today's custom of tucking "gold"—an orange or tangerine—into the toe of a Christmas stocking.

### Trimming Trees . . .

Trimmed Christmas trees first appeared in the United States probably during the American Revolution. Hessian soldiers with the

British forces started the practice to relieve their nostalgia for their homeland.

An early diary, written at Fort Dearborn, Ill., in 1804 relates the practice of trimming the Christmas tree with ornaments of the time.

### At the White House . . .

First National Community Christmas Tree in the U.S. was placed on the White House lawn in 1823, while Calvin Coolidge was President. The tree was a spruce from Coolidge's native state, Vermont.

In the following year Coolidge presided at a ceremony under the sponsorship of the American Forestry association, to urge the use of living Christmas trees.

### At the Round Table . . .

Traditionally, the first Christmas feast in England was held at the Round Table of King Arthur. While the specific date is undetermined, references to the famous king in medieval legends have been traced back to as early as 600 A.D.

## The NATIONAL OUTLOOK

By GEORGE HAGEDORN

### Killing the Goose . . .

In many of the major countries of the world, including the United States, an attack is being mounted on the patent system, which has been the source of so much of the improvement in human welfare. For the moment, the attack is concentrated on patents in the pharmaceutical field, but the same arguments could easily be applied to the whole principle of patent protection for new discoveries and inventions.

In this country the drive takes the form of proposals to limit full patent protection on newly-developed drugs to three years, instead of the normal 17. After the three years the holder of the patent would be compelled to license others to produce his product, on terms specified by the government.

In the words of the United States Constitution, the purpose of patent protection is to "promote the progress of science and useful arts" and the method is to secure the authors and inventors, for a limited period, "the exclusive rights" to their writings and discoveries. Compulsory licensing, as now contemplated, is hardly consistent with the concept of a patent as granting "exclusive rights."

Similar proposals, many of them going much further, are under consideration in a number of other countries, including Canada, India, Columbia and South Africa. In most cases, what is being considered verges on a virtual abolition of patent protection on drugs.

The basic argument advanced to support such proposals is a humanitarian one—people should not be compelled to pay more for life-saving drugs than they would pay in the absence of patent protection. This sounds appealing, but it overlooks the question of whether these drugs would have been developed at all without the promise of patent protection. Inexpensive drugs may save more lives than expensive ones, but non-existent drugs will save no lives at all. Research in the pharmaceutical field is both costly and risky. Huge sums must be spent, with no guarantee that the result will be successful or that it will not quickly be superseded by something even better. Obviously, no firm

will undertake such a program if it will have to share its successful discoveries with other firms who bore no part of the expense or the risk.

Patent rights are property rights, in just as real a sense as the ownership of a home or automobile is a property right. No one would build a house if he were compelled to share it with anyone who happened to come along.

And no one would undertake the expense, effort and risk of developing new products and processes without the exclusive right to their use conferred by patents.

### CHOIR STRIKES

Bedworth, England — Having grown tired of singing the same hymns week after week the choir of a church in Bedworth went on a strike.

The pastor, Rev. Peter Dominy, promised to select new and different hymns every week and the choir ended their strike and resumed their singing.

### ROASTING PEACOCK

Roast peacock was a Yule delicacy in medieval England. An early recipe directs careful removal of the peacock's head and skin so that the roast bird may be sewn back into it before serving.

(Advertisement)

### Set Sales Record

For the seventh consecutive 10-day sales period since the introduction of the current models — and for the 20th time this year — Pontiac Motor Division sales were at an all-time high.

Frank V. Bridge, divisional general sales manager, said more than 19,200 Pontiacs and Tempests were sold from December 1-10.

This surpassed by 26 per cent the previous record of 15,287 cars established in the same period a year ago.

Bridge also pointed out that in the calendar year to date, a record 579,697 Pontiacs have been sold.



a joyful christmas

Let us lift up our voices and sing out glad tidings for all to hear, in the spirit of the first Christmas.

WEINBERG DAIRY



### Naming Santa

Santa, the giver of many gifts, is a man of many names, too. While he is becoming almost universally known as Santa Claus, Santa or St. Nick, many European children still wait for the arrival of St. Nicholas.

St. Nicholas was the first of Santa's names and came from a real bishop in the fourth century, A.D. He is said to travel not by reindeer but on horseback, and wears bishop's robes.

Over the years, Santa has gained still other names. In France he's Pere Noel, in Finland Father Christmas, in Germany Kris Kringle, in Russia Father or Grandfather Frost.

### IN BETHLEHEM, GA.

A 60-foot star lights the countryside around Bethlehem, Ga., at Christmas. A carol service is held beneath the star on Christmas night.

### IN NORWAY

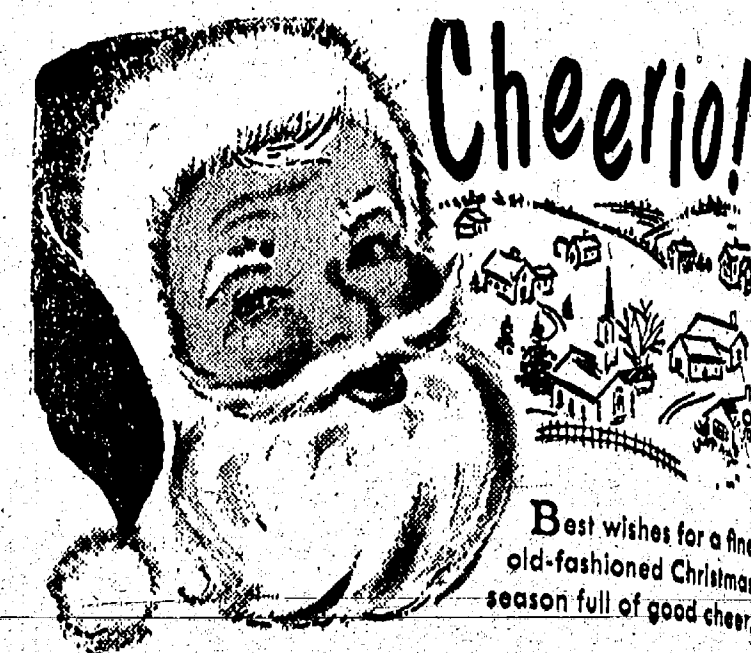
Norwegians hide an almond in the Christmas pudding. Tradition says the finder will be married in the next year.

## Blessings



We hark in our hearts to the angelic tidings, and extend best wishes for a happy and holy Christmas season

HANKERD'S SERVICE



SAM'S BARBER SHOP



A jolly salute to all and a hatful of cheery greetings for Christmas! May we extend our thanks and say, once again it's been a pleasure to serve you.

Palmer Motor Sales, Inc.

LEIGH PALMER - GEORGE PALMER

Helen Harris - Lyle Chriswell - Bob Freeman

Donald Koch - Slim Hubbard

R. V. Worden - Jimmy Brown (not the Cleveland Browns)

Dick Ball



"Bearing gifts we traverse afar . . ."  
As the Wise Men responded to the joyful tidings with gifts for Him, so Christmas today is a time of giving and sharing. May you be gifted with happy hours, glad memories, a contented spirit.



BLAESS  
Elevator Co.



SUBSCRIBE TODAY  
TO THE CHELSEA STANDARD!

## CHELSEA THEATRE

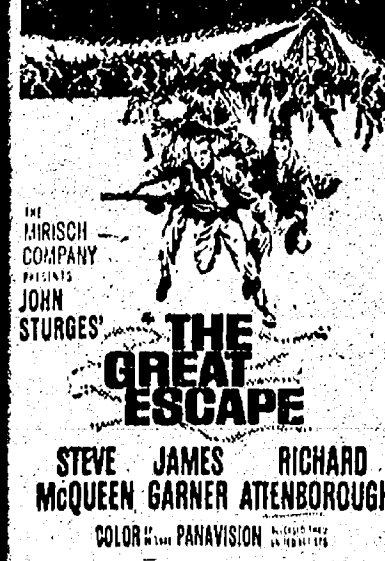
CHRISTMAS DAY  
DEC. 25

Shows at 3 - 6 - 9 p.m.

THURS., FRI., SAT.  
DEC. 26-27-28

Shows at 7:30 p.m. only

THE GREAT ADVENTURE BEGINS!



SUN.-MON.-TUES.  
DEC. 29-30-31

Shows at 7 and 9 p.m.

JERRY LEWIS

FAB-U-LEWIS  
fun festival  
for the whole  
family!

Don't Give  
Up The  
Ship

Rock-A-  
BYE  
BABY  
TECHNICOLOR

### HISTORIC SKIING

Michigan's Upper Peninsula has been a leader in promoting the sport of skiing since the Civil War, according to the Michigan Tourist Council. The first ski club in the United States was organized at Marquette in 1863 and the National Ski Association was founded at Ishpeming in 1904.

The University of Michigan was the first college or university in this country to establish a fully developed interdisciplinary program in communication science, in 1960.



We're all aglow  
with good  
wishes for all!  
**HARPER**  
Sales &  
Service, Inc.



**Silent Night, Holy night,**  
Shepherds quake at the sight,  
Glories stream from heaven afar,  
Heav'nly hosts sing Alleluia;  
Christ, the Saviour is born,  
Christ, the Saviour is born.

## Youth Faces Crippled Future With Inspiring Courage

Ann Arbor News writer, Norman Gibson, told the courageous story of Dexter township's Charles Scott, 19, of 8110 Gregory Rd. in the 12th issue. Scott, although he is suffering from cancer of the spine, serves as an inspiration to others as he carries on, working and looking forward, in spite of doctors' predictions that he has perhaps two years to live. Gibson said:

He was 3 feet 7 inches—short for a basketball player—but he made the first team in his freshman year at Dexter High school. When Scott found out what was causing the pains in his back he knew he wouldn't play any more basketball.

But Scott has spunk which, translated, is a kind of courage that few will ever be called on to muster.

Still only a teen-ager, Scott is suffering from cancer of the spine. Now, two years later, he often finds the pain too much to bear. "Yet, he's one of the best workers we have," says Mrs. Venita Dickerson, president and founder of CAP, Inc., which employs handicapped persons.

Mrs. Dickerson spoke softly and she was weeping quietly as she told how Scott had come to CAP about 18 months ago and applied for a job.

"It is one of the greatest stories of courage I have ever seen," she said. "He came in here limping, and I didn't think he knew what his condition was."

About a month ago, Mrs. Dickerson, who herself wears braces on her legs and gets about in a wheel chair, learned that Scott knew all along that doctors had determined he eventually would lose his ability to walk.

He also knew all this time doctors were giving him not much more than two years to live.

"It's something I've come to accept," says Scott who looks at you with penetrating blue eyes which seem to see beyond the horizon.

"There is a scheme and a way for everything, I think," Scott said. "If this is what God has planned for me, then I know that is what is supposed to be." Whatever the future holds, Scott is not going to let life's foul shot blow the whistle on him. He is hoping that about next

June he will be able to marry. Muscular of build, Scott says he was quite active, working at a garage in Pinckney and helping his uncle patch straw when he first noticed the pains.

After a series of examinations, he was taken to St. Joseph Mercy Hospital, Ann Arbor, for an operation.

"They didn't want to tell me," he says, "but I knew from the way they were acting, they were trying to hide something from me. The doctor would come into the room and hurry right out. When I got home, my mother started to cry."

Scott walked about his duties at CAP with a cane at first, then two canes, then braces, and finally he was confined to a wheel chair.

At present, he works from noon to 4:30 p.m., three or four days a week, depending on how he feels.

"He's one of the most wonderful workers we have," Mrs. Dickerson says. "Although I knew it, he has never told any of the other workers here of his condition, and in the past 1½ years, he's only missed one or two days of work."

Scott and the other workers at CAP yesterday were working on roads, which connect the push bot-

### FOR CHRISTMAS ENJOYMENT:

## President Sought 'Good Old Days'

At Christmas time, nostalgia for "the good old days" is as prevalent as turkey and trimmings, decorations and gifts.

Everybody had more fun—or so the feeling goes—during those good old-fashioned Christmas when life was simpler and, according to tradition, the snow drifts were always piled high, the foods for feasting were always home-grown and home-cooked, the gifts and decorations always lovingly hand-made and the tree itself always chopped down by the head of the house on a personal foray to some hillside or lot.

Christmas nostalgia has even been known to affect heads of state—to be specific, a President of the United States. It was everyone's duty, the President felt, to make Christmas merry. He and his family, he declared were going to have an "old-fashioned" Christmas tree.

It Happened in 1891. A search through recent newspapers, or even through recent history, would provide no details, however, about this resolve. For the President was Benjamin Harrison, who on Dec. 22 in 1891, announced to reporters his plan for a "good old-fashioned Christmas."

Most people today whose thoughts turn to Christmases of yore would certainly settle for a date much later than 1891 as the time when the "good old-fashioned" Christmas had ceased to exist.

But if the spirit of an old-fashioned Christmas didn't vanish as

early as President Harrison feared it had, when did it go? Or has it really disappeared forever?

Most of all, an "old-fashioned" Christmas is made up of traditions. Even in northern climates, only hope, luck and the weatherman can say, each year; whether the traditional snow drifts will be forthcoming. Other traditions, however, may not necessarily belong only to the past.

### Not All Store Bought

Preparing foods for feasting was doubtless fun—and hard work—in the good old days. But not all Christmas cookies, candies and fruit cakes today are "store bought." Many a family cherishes the tradition of having the children "help" Mother as the holiday goodies are concocted.

Even the ready-prepared foods have their traditions. For instance, some families deliver gift packages of cakes or candies to friends when they make Christmas calls; others set for a table of treats in the home, ready to share with callers.

The same is true of that "good old days" habit of making gifts. In this "new day" of increasing interest in sewing, many lovingly home-crafted gifts are found under Christmas trees—and yesterday's Mom would no doubt have been glad to trade her treadle sewing machine for one of today's electric models.

### Can't Chop Tree

While Dad may not be able to chop down a tree for the family (conservationists of our "good old forests" wouldn't approve), a look at any place where trees are sold in the days before Christmas reveals that choosing the tree is still a personal, all-family matter, involving plenty of old-fashioned fun.

Almost every nostalgic dream of Christmas long ago seems to have its counterpart in the present. And all the while new traditions are building up, as each family, each community creates and treasures its customs.

In another 70 years, perhaps, some public figure may say, "it's time to get back to the good old ways of celebrating Christmas." So have an old-fashioned Christmas, now!

### Michigan Motorists Are Traveling Faster Than Ever Before

Lansing—The average speed of all vehicles on Michigan highways this year is 56.9 miles an hour, an increase of eight-tenths of a mile over 1962, according to the State Highway Department.

The average speed on Michigan highways has been going up every year since 1920 when it was 48 miles an hour.

This year, during daylight hours, passenger cars have been averaging 58.4 miles an hour, compared to 56.6 last year. Buses have averaged 56 miles an hour, up from 55.1. And trucks have been averaging only "slightly more" than the 48.8 miles of 1962.

At night, passenger cars have been averaging 56.5 miles an hour, up from 55.3 in 1962.

The Highway Department's annual speed survey is conducted with radar sets stationed at 26 daytime sites and 10 nighttime locations around the state. The same locations are used each year to eliminate variable factors.

tons on car doors to the door locks.

Ann Arbor Mayor Cecil O. Creal visited the CAP facilities in Seco township recently, but Scott wasn't feeling well and missed him.

However, the next day was different. Mrs. Dickerson called Scott into her office from the plant and asked him what was the one thing he wanted most.

"I like cars," Scott said. "My brothers and I had plans to make a hot-rod and take it out to the Manchester Speedway. I still have a 1958 Ford that I can't drive now, of course."

Mrs. Dickerson interrupted him: She introduced Scott to Lew Long of Bob Buell Dodge, Inc., Ann Arbor.

Long had made arrangements to have Wayne Lawrence at the North Main Collision install a system which will allow Scott to shift gears and use the brake pedal with hand levers.

An Ann Arbor service club is reportedly standing ready to make over the basement of the Scott home so that he won't have such a difficult time getting up a steep ramp to enter his house.

Scott is looking forward to spending a quiet Christmas at home with his family (he has three brothers and a married sister) and to welcoming the New Year quietly.



Greetings  
AND BEST WISHES  
FOR THE  
Christmas  
Season

Don's  
Standard  
Service



Recreation Tavern  
ROBERT HOWE



Merry  
Christmas  
to You

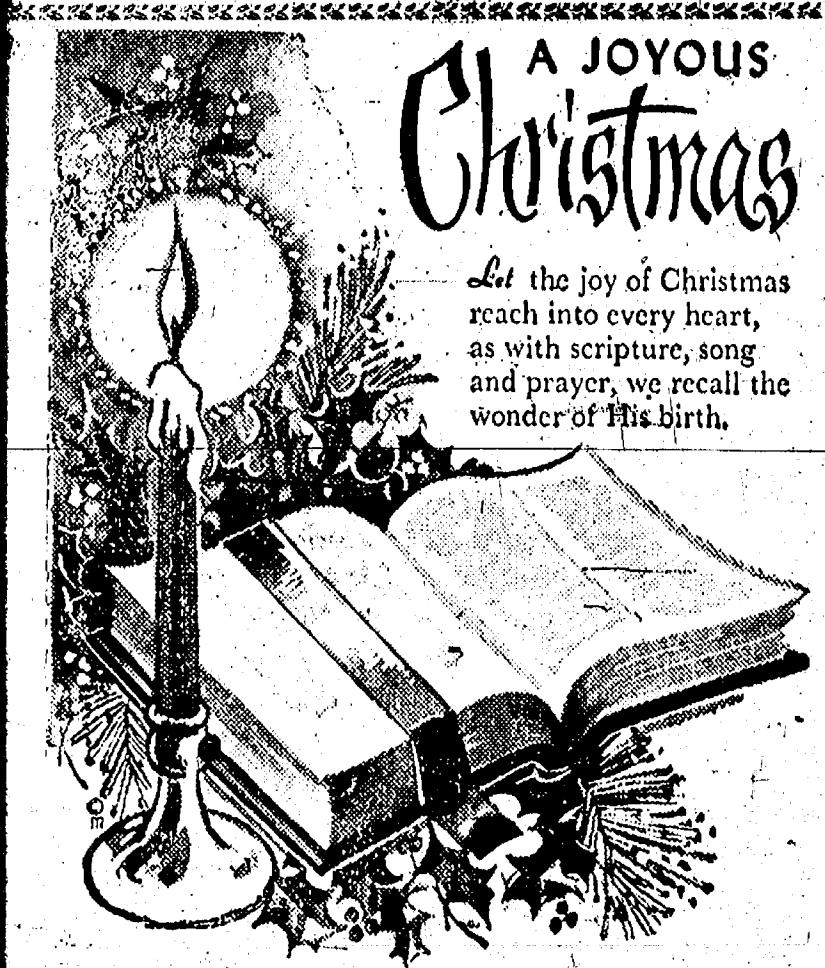
It is a  
real  
pleasure  
to say  
"thank you"  
and wish you  
the happiest of  
holidays.

Attend Our New Year's Eve Party

Open Until?

WONDER BAR

HOWARD and GLADYS MILLER

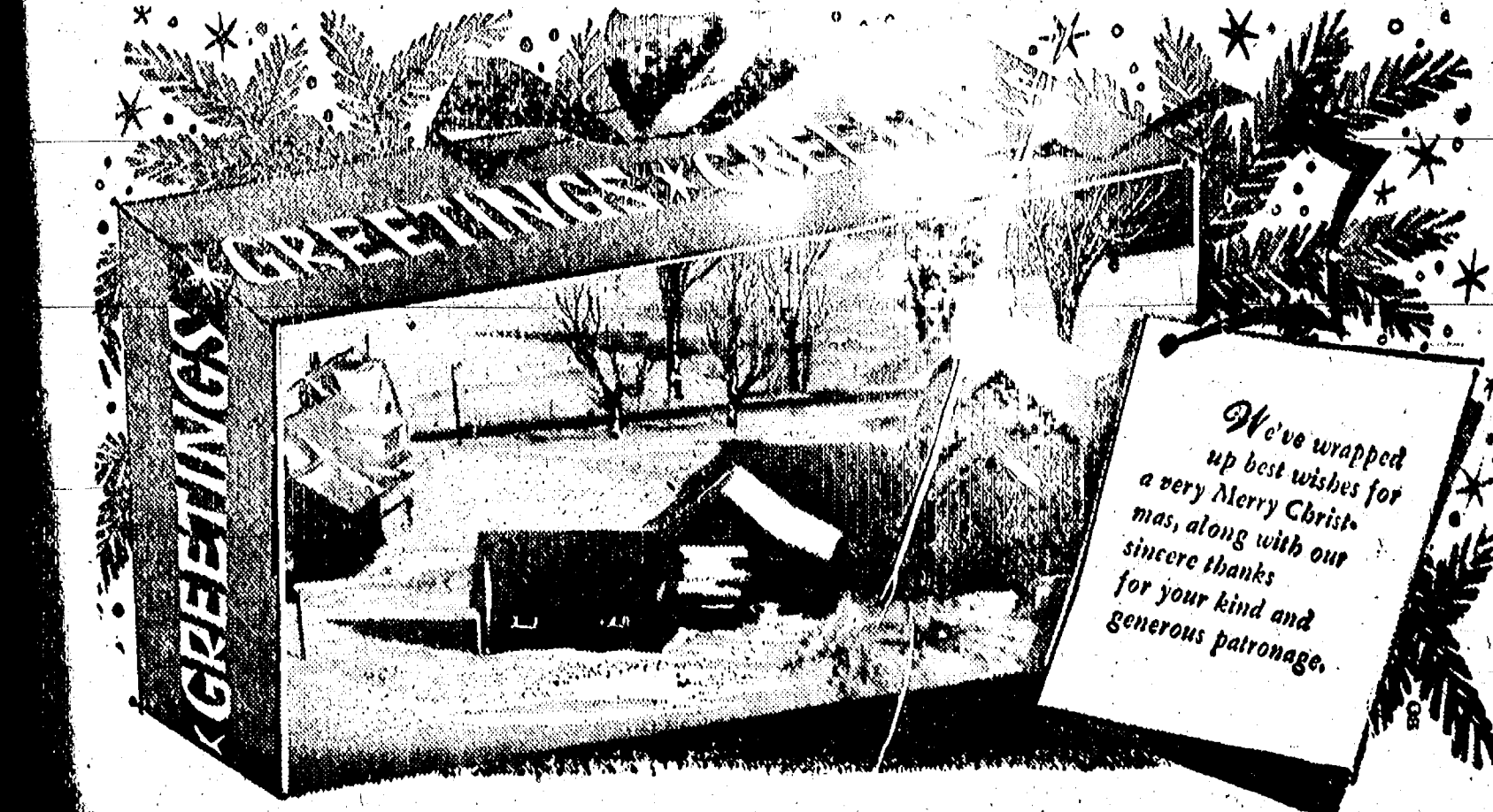


## A JOYOUS Christmas

Let the joy of Christmas  
reach into every heart,  
as with scripture, song  
and prayer, we recall the  
wonder of His birth.

Farmers' Supply Co.

ANTON NIELSEN



GROVE  
5c to \$1.00 STORE

JOHN and DORIS PERRY  
Lou Parsons - Jan Flint - Edith Kealy  
Loretta Doll - Sue Woods - Gwen Guenther



Hi!  
and  
Merry  
Christmas  
to  
Everyone!

W. E. FARRELL  
Sheet Metal



**It's An Old Custom ...**

Festive wreaths and garlands made of evergreens, cones and herbs, are, nowadays, closely linked to the celebration of Christmas. The custom of making such garlands for gala occasions actually dates back to the ancient Egyptians, a thousand or more years before the birth of Christ.

**BUSY WINTERS**

Winter vacation travelers to Michigan winter sports areas totaled a record 200,000 during the 1935-36 season, according to the Michigan Tourist Council. They created a \$20 million winter recreation business for the state. Pre-season estimates indicate these figures will be surpassed during the 1936-37 winter season.

**Christmas Tree Growing Is Not Easy**

Do you get delusions of great fortunes when you think of all the Christmas trees you could raise on that sandy back 40?

That is a common reaction at this time of year, especially when you have to shell out as much as five bucks for a Christmas tree you could have raised yourself.

There is more to growing Christmas trees than just sticking pines into the ground and waiting to reap the profits, Lester E. Bell of the Michigan State University Forestry Extension Service says.

In the first place, he says, Christmas trees are now being planted at the rate of 30 million per year in Michigan alone. At the same time, only 2 million are being harvested. Unless new markets are opened up relatively soon, many of these trees will never become Christmas trees when ready to go to 12 years from now.

With this huge supply of trees, only high quality trees will be saleable. This is the part that takes the "sitting back and waiting" out of raising trees.

As with any crop, there are standards. For example, U.S. premium grades consist of trees "possessing characteristics of the species, which are fresh, clean, healthy, well trimmed, of not less than medium density, with normal taper and each of the four faces free of damage by any cause."

Most all of these factors are controllable and the work of raising Christmas trees is directed at these factors.

Trees have to be freshly cut to be sold, have to be free from moss and vines, healthy and have good color. The foliage must be dense, which calls for pruning and shaping as the trees grow.

Christmas tree pruning must be done at the proper time of the year—only about 10 ideal days. By pruning, the distance between branches and the number of branches on the tree can be controlled, and therefore the thickness of the foliage.

Pruning also gives the tree its shape. Of course, pruning can only be done after the trees are planted and growing. Young trees have to be kept weed free, or competition may kill trees or stunt growth.

Mice eat the bark of young trees in the winter, taking a toll. The white pine weevil and other insects must be controlled by spraying. Brush must be cut, as it competes for sunlight and makes fine fuel for a fire.

Cutting the trees, transporting them and finding a market must be considered, as this is the money end.

A note of cheer for the prospective millionaire is the fact that Michigan trees are finding wide acceptance in other states, Bell said. The high quality insures a sale, currently at least, for Michigan trees. The dollar volume may run \$3,000,000 this year.

However, 30 million is a lot of trees, and they'll be ready for a market in a few years.

Many of the birds killed but not found are flying today

**FARMERS**  
FOR TOP PRICES  
FOR YOUR LIVESTOCK  
Consign to the  
**Howell Livestock Auction**  
We have buyers for all kinds of livestock. Sale every Monday at 2 p.m.  
**Phone 1089 Howell**  
For Any Information

**Christmas Has Many Rituals**

Though Christmas comes but once a year, there is certainly no one and only way to celebrate it.

In addition to the many customs that are generally shared—lights, bells, trees, gifts, Santa, prayer and feasting—the special ways of observing the holiday are as varied and numerous as the communities and families involved.

Often the history and culture of a community is the inspiration for the way it celebrates Christmas. In other cases the "customs" are consciously developed, in an effort to express the spirit of the

season. It doesn't take long for these community projects to become well-loved, even "old-fashioned" traditions.

Volumes could be filled with an account of interesting community Christmases, each of them different. A few are summarized below.

**'Santa's Home, U.S.A.'**

Feature of the Christmas season at Putney, Vt., is "Santa's Land, U.S.A." Santa greets his friends here in one of his homes—away-from-home—since the North

Pole must be considered his official residence.

The building is set against a background of pine trees, in the foothills of Vermont's Green Mountains. The large letters "S.C." on the chimney identify it as Santa's residence.

**In New Orleans**

Carol sings are a traditional part of the holiday season in New Orleans. Many of them are held across the street from St. Louis cathedral. This historic cathedral in the French Quarter is a focal point for the community's religious observances of Christmas.

Here youthful carolers from a private elementary school, La Petite Ecole, convene to sing the familiar songs, in both French and English.

**Christmas Tree Lane**

Important part of the holiday season in California is the famous ceremony of "Christmas Tree Lane" at Altadena.

Huge deodar cedars border a public thoroughfare in this city, and at Christmas it is transformed into "Christmas Tree Lane." The trees are lit with thousands of bulbs, turned on at dusk on Christmas Eve, and motorists celebrate the spectacle by driving slowly along the lane.

The tall, graceful deodars were brought to California by Captain Frederick J. Woodbury who, while visiting in India, saw them growing on the slopes of the Himalayas. He returned with deodar seeds, which he planted on his ranch.

In 1885 his sons transplanted the young trees along what was then the principal roadway to the Woodbury ranch.

**City of Candlelight**

"Richmond—City of Candlelight" has been the Christmas theme for Richmond, Va., for the past five years.

Taking the cue from Colonial Williamsburg, Richmond sought to initiate the rebirth of an old-fashioned Christmas tradition by urging residents and organizations to "place an electric candle in every window."

The shopping area presents triple candles in evergreen bases set in the median strip; from the windows of the governor's mansion and the capitol glow electric candles; incoming planes are greeted with candles at the airport; virtually every building in the city cooperates.

**Actors Go Caroling**

Community caroling in Hanover, Va., for the past 10 years has been provided by a group of actors from Bardsdale theatre and friends.

Moving about the town in red costumes and carrying lighted candles, the carolers concentrate on houses with children and elderly people.

They approach the houses singing "Jingle Bells," render two more carols and move away singing "We Wish You A Merry Christmas."

**In French Canada**

In French-Canadian homes, one of the highlights of Christmas is the "Reveillon," a middle-of-the-night family feast, for adults. The meal is served after the return from midnight mass but the preparations start many weeks ahead.

Much of the food for the feast, nowadays, centers around turkey and trimmings. But the traditional dishes, including goose with nut stuffing, and such specialties as "courtières," or spicy pork pies, are still prepared for the Reveillon.

**In New Mexico**

Indian, Spanish and American cultures all contribute to the ways of celebrating Christmas in New Mexico.

"Prayer dances" performed by the Indians unite their ancient ceremonials with their present Christianity. Following midnight mass on Christmas Eve, they hold four days of prayer dances. At Taos Pueblo, Indians conduct a Christmas week.

The candles known as luminaries are a Spanish contribution.



**Christmas Cheer!**  
May the season bring great joy to you.

**Standard Oil Products**

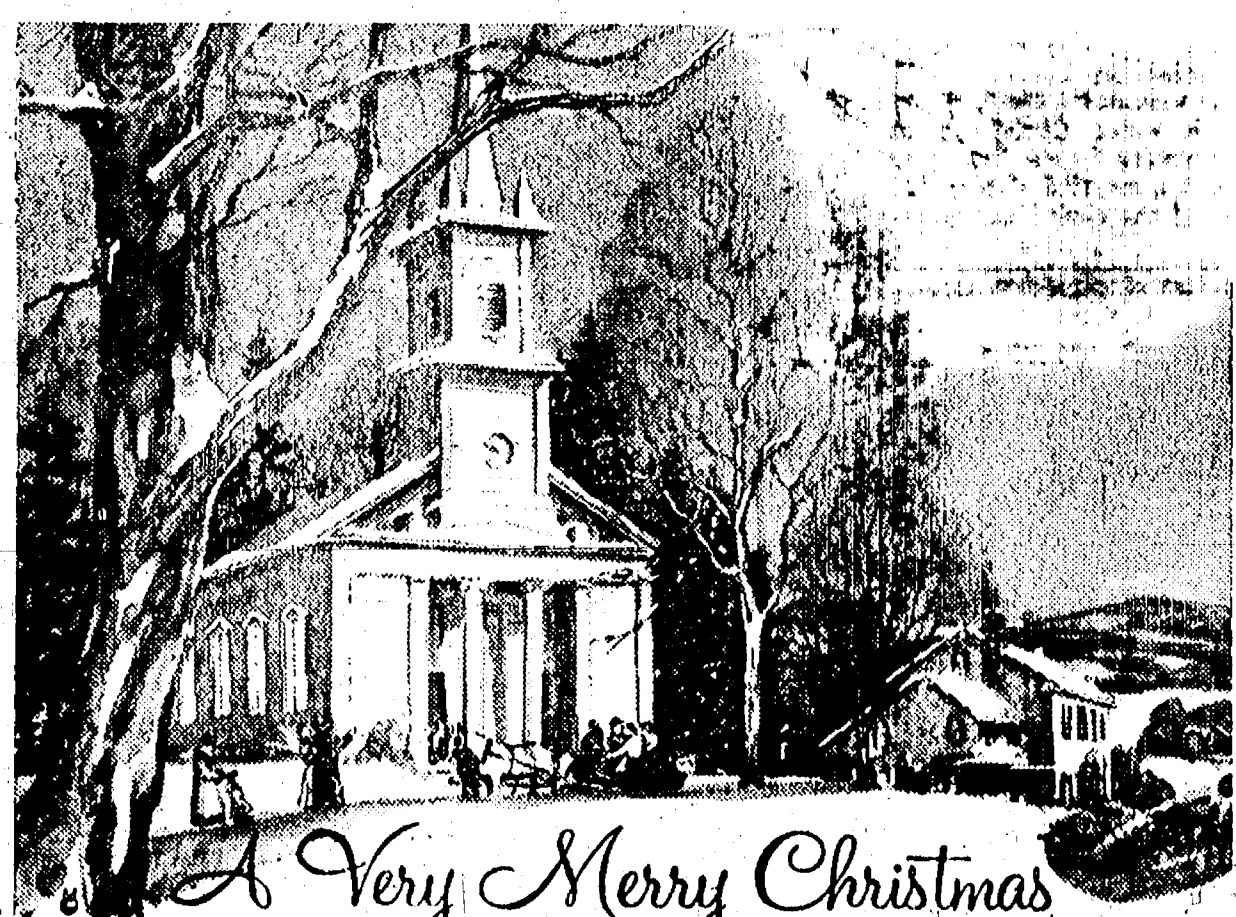
George Knickerbocker, Agent

Terry Helgren, Driver



May you enjoy the season's splendor in the love of dear ones and the warmth of spiritual well-being.

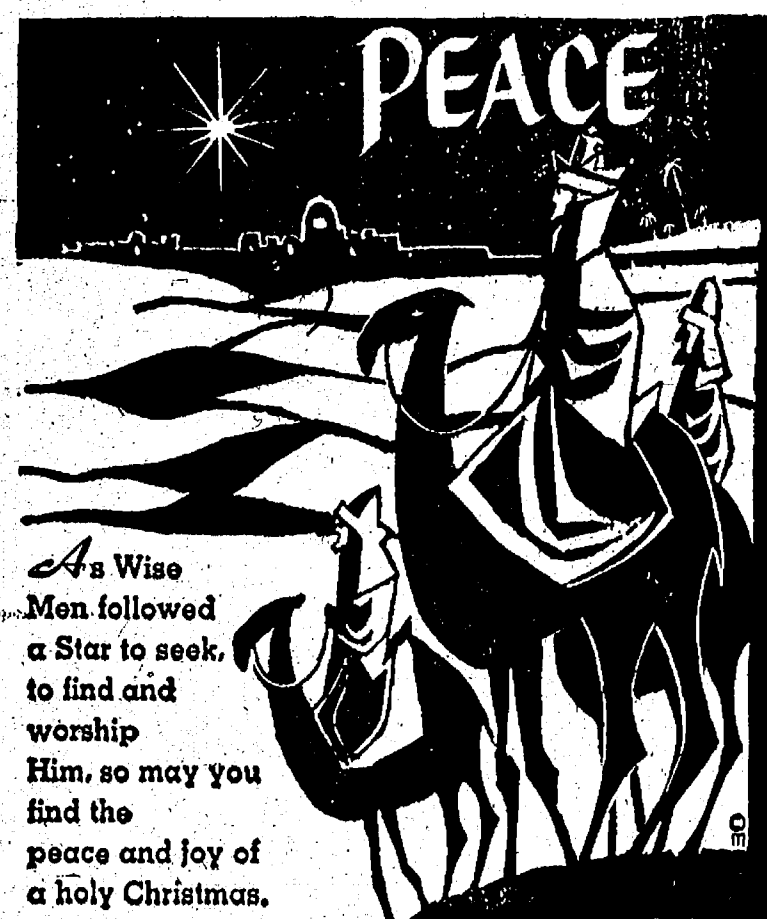
**SCHUMM'S**



**A Very Merry Christmas**  
We take this happy time of year to wish you all the joys of the Holiday Season, and to join all men of good will in a prayer for worldwide peace and understanding. May your Holidays be merry and Bright!

**ALBER OIL COMPANY**

DON - BETTY - JACK - CLARENCE - DOUG



**KERN REAL ESTATE**

L. W. KERN



**Foster's Men's Wear**



At this glad Christmastide, we wish for you the great gifts of faith renewed and spirit uplifted by the joy and promise of His holy birth.

**BAXTER'S MARKET**



**BROWN'S WELDING**

Put up early in December, they are used to outline walls of houses and stores, as well as curbs and driveways. Then there is the ceremony of groups and families.

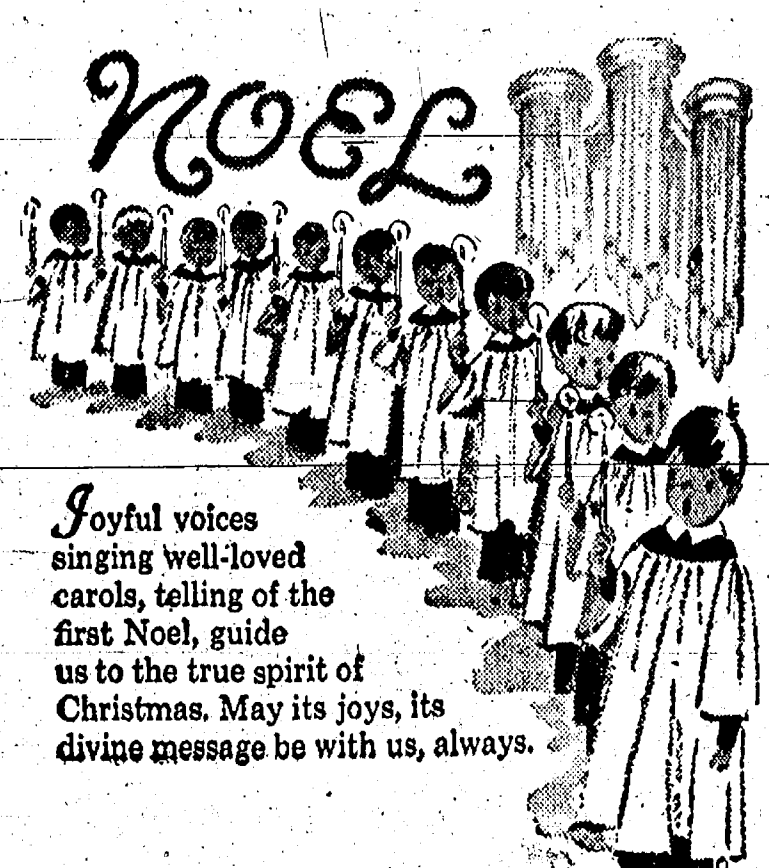


**Christmas Greetings**  
... of the warmest, old-fashioned kind, from all of us to all of you!  
**Very Merry Christmas!**  
**Modern Beauty Shoppe**

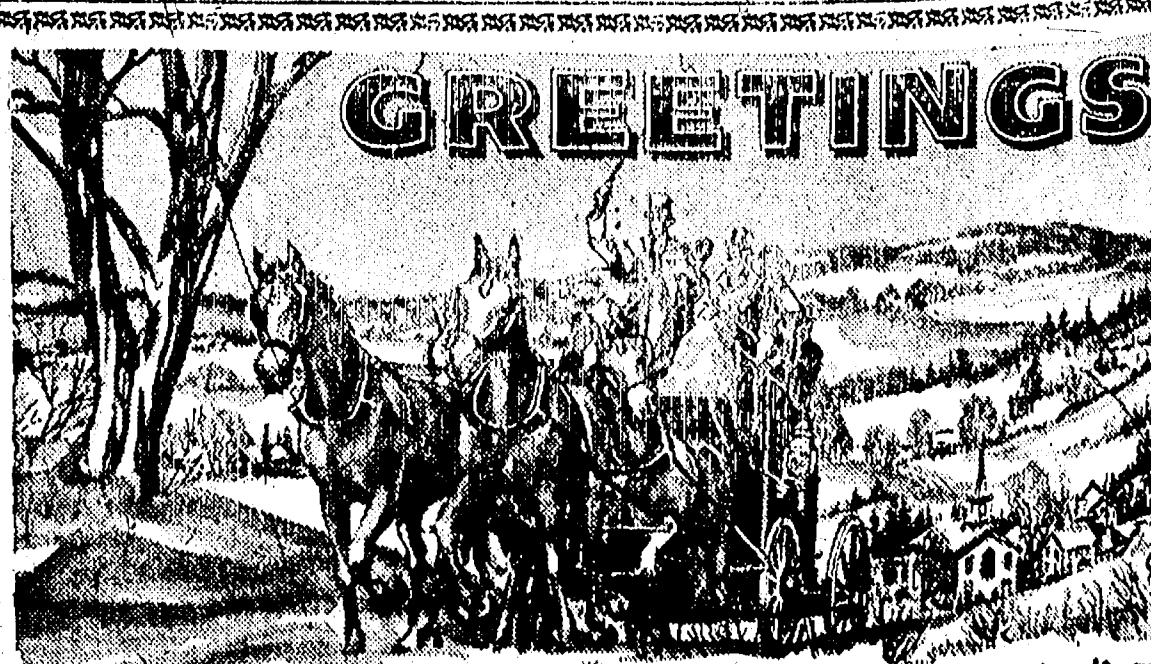


**GUENTHER STUDIO**

RALPH GUENTHER



**WASH 'N DRY LAUNDRY**

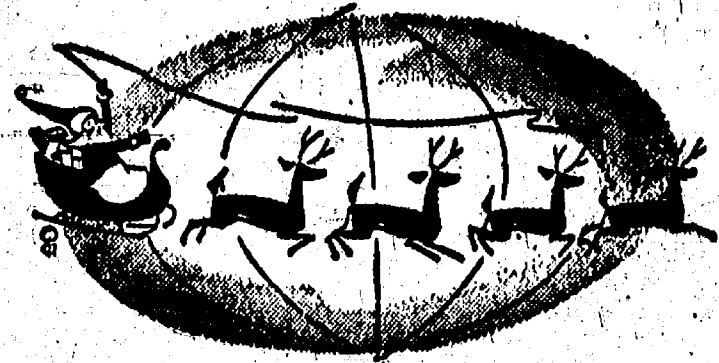


**WOLVERINE TAVERN**

CARL - NINA - DON - GINNY



Santa's Busy But He Has Plenty of Help



Even though Santa is sometimes pictured as traveling by rocket or by jet plane, his favorite mode of transportation still seems to be the famous reindeer-drawn sleigh. The only wonder is that he can remain as jolly as he traditionally is, when he has to cover the world in one night, delivering gifts by the billions.

Perhaps the explanation may be found in the number of helpers he has, and also in the fact that Christmas Eve is not his only day for delivering gifts.

St. Nicholas, a real bishop, was the first "Santa." Many legends grew up around his name, and many centuries after his death on Dec. 6, about 842 A.D., he was honored as a friend to the young.

Dec. 6 became "Children's Day," and St. Nicholas, traveling by horse, brought gifts to reward children for good behavior.

Although Santa has to a large extent replaced St. Nicholas, in some European countries children still await the arrival of the bishop on the night of Dec. 5, and set out shoes filled with hay and carrots for his horse.

In Scandinavian and some other countries, Santa gets an assist from St. Lucy, who is responsible for the distribution of gifts on her day, Dec. 13.

Christmas comes after Christmas to many homes in France and French Canada, where the old tradition of giving gifts to children on New Year's day is observed. There's a resemblance to Christmas in the placing of gifts beside the fireplace, often in stockings.

Even then, the Santa season isn't finished. Many Spanish children expect the Three Kings to bring them gifts on Epiphany, Jan. 6. They, too, set out shoes filled with straw and grain for the horses the Kings ride.

Whatever the gift-giving date, Santa has a host of helpers to lighten his load. In addition to St. Lucy, Scandinavian countries have the Tomtar, little gray-bearded men who are said to hide gifts for boys and girls on Christmas Eve. The Christ Child or Kristkind brings the gifts in many countries.

In Italy the traditional gift-giver is Befana, sometimes described as a benevolent fairy and sometimes as a witch. Legend says that she misdirected the Magi or that she refused shelter to the holy family. Now she goes around the world, in repentance, seeking the Christ Child and doing good to children on Christmas Eve.

Aliens Required To File Addresses Each January

Detroit—District Director Walter A. Sahli, of the Immigration and Naturalization Service, stated that the annual alien address report program usually causes a sharp rise in the number of applications for naturalization.

The law requires all aliens in the United States, with few exceptions, to report their addresses each January. Throughout the United States, almost 30 percent more applications for naturalization are received during the month of January, February and March than are received during other months. Sahli attributes the sudden rise to the Alien Address Report Program.

Aliens not required to make this report are diplomats, those accredited to certain international organizations and those who have entered temporarily as agricultural laborers.

Forms for making the reports will be available to aliens at all Post Offices and offices of the Immigration and Naturalization Service during the month of January. Sahli indicated that aliens desiring information concerning naturalization or similar matters should obtain the forms at an office of the Immigration and Naturalization Service where personnel trained in these field will be available to answer inquiries.

Michigan ties New York state for having the most miles of trout streams, and approximately half of Michigan's 36,350 miles of streams are trout waters.

Bells, Bells, Bells

Through the ages, bells have served many purposes — announcing the approach of vehicles, for instance, or signaling the beginning of curfew. Early associated with churches, by medieval times the pealing of the bells had come to signify the rejoicing of the Christmas season.

An early custom was the tolling of church bells on Christmas Eve, during the hour before midnight. The tolling announced the death of Satan, and at midnight joyous peals told of the birth of Christ.

In England, where bell-ringing is an honored, family-taught art, the tuneful bells ring out at seven-thirty on Christmas morning.

Years of training and practice to learn the ringing of complex "changes," as the different chants and tonal combinations are called.

Star of Bethlehem Remains An Astronomical Mystery

Ann Arbor — With Christmas symbols everywhere, the popular interest in astronomy reaches its peak this week.

But the Star of Bethlehem still remains an astronomical mystery. "The narrative about the star is too incomplete, the date of its appearance too uncertain, to lead to any definite conclusions," University of Michigan astronomer Hazel M. Losh says.

"Perhaps a most likely explanation advanced is that the 'star' reported to have guided the Wise Men may have been a conjunction or close passing of planets."

Such a conjunction occurred in the year 7 B.C. with the planets Mars, Jupiter and Saturn. "Also at this time these planets met in the constellation of Pisces (The Fishes), which of course would have had some significance in the early church."

"Such an arresting figure would most certainly have drawn the attention of the Magi or astrologers who would have been looking for a sign, and who would have attached mystical meaning to the appearance," Professor Losh says. "Other suggestions are that the Christmas star may have been a comet, a nova, or the bright planet Venus."

"Perhaps the best thing to do is to pick out the symbol in the sky that you like best and make it your Christmas star," Professor Losh suggests.

"The date of Christmas is believed to bear a real relation to the sun and the winter solstice. The Christmas celebration most likely was set to agree with the earlier pagan festival attendant upon the rejoining in the turning northward of the sun at the winter solstice, and the promise of the return from the cold bleak temperatures to warmer weather."

Lists TV Violence As Factor in Our Highway Death Toll

Grand Rapids — An Air Force research expert told an auto safety seminar recently that television violence has contributed to national apathy and callousness over America's grim highway death toll.

Col. John Paul Stapp, who conducted famed "rocket sled" tests to determine how much force of gravity the human body can withstand, blamed television for making "death and injury cheap."

"Some 1,300 synthetic homicides a year beamed into American living rooms, plus untold numbers of less serious mayhems, have taught us, particularly our young people, to be callous," he said.

The political campaign for 1964 is already under way, whether you know it or not.

Civil Defense

Confusion Over Nuclear Test Ban

CLAIM: "With the nuclear test ban now in effect, the U.S. doesn't need protection from radioactive fallout."

Answer: Many persons, accidentally or purposely, have confused the nuclear test ban with the civil defense program. There is no real connection between the two. The test ban agreement commits the U.S. and Russia not to set off test weapons in the atmosphere. It does not restrict the use of nuclear weapons in warfare, and that is what our civil defense program is concerned with. The treaty has no effect on the production, stockpiling or war time use of nuclear weapons by either nation.

The late resident Kennedy and other national leaders, have described this pact as one small first step toward the relaxation of tensions between East and West. They also have warned against any lessening of our defense efforts.

Stuart L. Pittman, Assistant Secretary of Defense for Civil Defense, stated last summer: "If the test ban is ushering in a period of relaxation of international tension, as we all hope, it is the joint duty of Congress and the executive branch to be sure it doesn't usher in a premature relaxation of efforts to maintain and improve our defenses. To reject civil defense at the first blush of diplomatic achievement would be dangerously misleading to observers abroad and to the American public."

Continuing U. S. harassment by the Soviets demonstrates that this agreement has not inhibited the U.S.S.R. from continuing its cold war policies and tactics, nor altered its long-range objective of ultimate world domination.

Of Carols...

In England and France the custom of carol singing at Christmas stemmed from the songs sung between the scenes of the medieval "mystery" or "miracle" plays, which were created to teach the Bible to the people of the time, few of whom could read.

The early miracle plays portrayed the coming of Christ, in simple drama. Later plays became more elaborate, with fictional scenes added.



Because we realize how much our success is due to you, we are most sincerely appreciative.

DICK KISS  
Bulldozing Contractor

Journeying to Bethlehem



Christmas Visitors Seek Church of Nativity Each Year for Three Celebrations of Christmas

Pilgrimage to Bethlehem is for thousands of Christians each year the focal point of the religious observance of Christmas. Visitors of many faiths make the trip to Bethlehem, now a part of Jordan, to the Church of the Nativity above the Grotto of the Nativity where Christ was born.

The manger so familiar to all who know the Christmas story was an improvised stable in a cave hewn out of rock, near the center of the hill town of Bethlehem.

Christmas is observed there times at Bethlehem, and for each observance the Mandelbaum Gate between the Israel and Arab sectors of Jerusalem is opened to admit the Christian pilgrims.

Roman Catholic, Greek Orthodox and Armenian denominations share the Church of the Nativity. Roman Catholic churches begin the Christmas celebrations with masses on Christmas Eve, Dec. 24. Eastern churches observe

Christ's birth in January. For the Greek Orthodox churches, which still follow the old Julian calendar, Holy Night is Jan. 6, Christmas Day, Jan. 7. Armenian churches celebrate both Christmas and Epiphany on Jan. 19.

Those of the Protestant faiths gather in Shepherds Fields, the nearby site where, according to tradition, the shepherds heard the angel of the Lord come to tell of the Nativity.



DEN II—Cub Scouts of Den II and their parents had a Christmas party Friday evening at the home of Mr. and Mrs. Willis Heydlauff.

To wish  
you  
every  
Joy  
and  
Blessing  
for  
Christmas



THE PUB



A Christmas Wish

We wish our friends and patrons the merriest Christmas ever and a holiday season filled with good cheer. Our grateful thanks to all.

PARKER'S  
CHELSEA CLEANERS



Joy to the world on this Christmas!  
We wish you the blessings of the Day.

REJOICE

CLOSED ALL DAY CHRISTMAS

FOUR MOBIL SERVICE

ALVIN FOOR  
Joe Clark - Ralph Fletcher - Len Hafner  
Art Stoll - Gerald Wenk



Warm  
Christmas  
Wishes  
Hope Santa  
fills your  
Christmas  
stocking  
with  
everything  
your heart  
desires!

Wallace C. Wood

State Farm Mutual Insurance Companies  
105 South Main Street Phone GR 5-5341  
Chelsea, Michigan



CHRISTMAS GREETINGS

There's no season quite like Christmas... no custom quite so happy as the old tradition of exchanging greetings. With real appreciation for our cordial relations, we thank you and wish you a most joyful holiday.

Chelsea State Bank